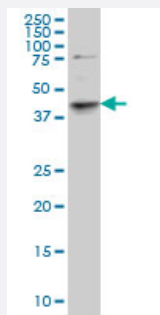


# SGK2 monoclonal antibody (M02), clone 1A7

Catalog # H00010110-M02

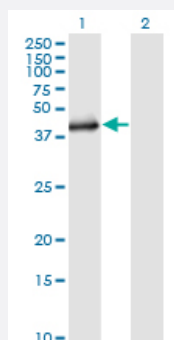
Size 100 ug

## Applications



### Western Blot (Cell lysate)

SGK2 monoclonal antibody (M02), clone 1A7 Western Blot analysis of SGK2 expression in PC-12 ( Cat # L012V1 ).

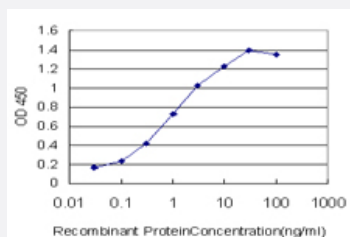


### Western Blot (Transfected lysate)

Western Blot analysis of SGK2 expression in transfected 293T cell line by SGK2 monoclonal antibody (M02), clone 1A7.

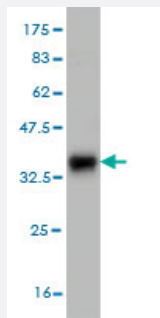
Lane 1: SGK2 transfected lysate(41.2 KDa).

Lane 2: Non-transfected lysate.



### Sandwich ELISA (Recombinant protein)

Detection limit for recombinant GST tagged SGK2 is approximately 0.03ng/ml as a capture antibody.



Western Blot detection against Immunogen (33.88 KDa) .

## Specification

<b>Product Description</b>	Mouse monoclonal antibody raised against a partial recombinant SGK2.
<b>Immunogen</b>	SGK2 (AAH65511, 293 a.a. ~ 367 a.a) partial recombinant protein with GST tag. MW of the GST tag alone is 26 KDa.
<b>Sequence</b>	SPINWDDLYHKRLTPPFNPNTG PADLKHFDPEFTQEAVSKSIGCTPDTVASSSGASSAFLGFSY APEDDDILDC
<b>Host</b>	Mouse
<b>Reactivity</b>	Human, Rat
<b>Isotype</b>	IgG1 Kappa
<b>Quality Control Testing</b>	Antibody Reactive Against Recombinant Protein. Western Blot detection against Immunogen (33.88 KDa) .
<b>Storage Buffer</b>	In 1x PBS, pH 7.4
<b>Storage Instruction</b>	Store at -20°C or lower. Aliquot to avoid repeated freezing and thawing.

## Applications

- Western Blot (Cell lysate)

SGK2 monoclonal antibody (M02), clone 1A7 Western Blot analysis of SGK2 expression in PC-12 ( Cat # L012V1 ).

[Protocol Download](#)

- Western Blot (Transfected lysate)

Western Blot analysis of SGK2 expression in transfected 293T cell line by SGK2 monoclonal antibody (M02), clone 1A7.

Lane 1: SGK2 transfected lysate(41.2 KDa).

Lane 2: Non-transfected lysate.

[Protocol Download](#)

- Western Blot (Recombinant protein)

[Protocol Download](#)

- Sandwich ELISA (Recombinant protein)

Detection limit for recombinant GST tagged SGK2 is approximately 0.03ng/ml as a capture antibody.

[Protocol Download](#)

- ELISA

## Gene Info — SGK2

Entrez GeneID [10110](#)

GeneBank Accession# [BC065511](#)

Protein Accession# [AAH65511](#)

Gene Name SGK2

Gene Alias H-SGK2, dJ138B7.2

Gene Description serum/glucocorticoid regulated kinase 2

Omim ID [607589](#)

Gene Ontology [Hyperlink](#)

**Gene Summary** This gene encodes a serine/threonine protein kinase. Although this gene product is similar to serum- and glucocorticoid-induced protein kinase (SGK), this gene is not induced by serum or glucocorticoids. This gene is induced in response to signals that activate phosphatidylinositol 3-kinase, which is also true for SGK. Two alternate transcripts encoding two different isoforms have been described. [provided by RefSeq]

**Other Designations** OTTHUMP00000031702|OTTHUMP00000031703|OTTHUMP00000031705