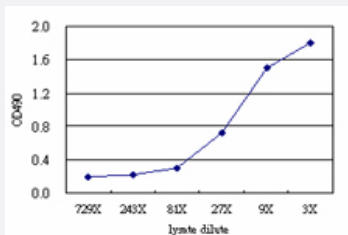


SGK2 (Human) Matched Antibody Pair

Catalog # H00010110-AP51

Size 1 Set

Applications



Sandwich ELISA detection sensitivity ranging from approximately 729x to 3x dilution of the SGK2 293T overexpression lysate (non-denatured).

Specification

Product Description

This antibody pair set comes with a matched antibody pair to detect and quantify the protein level of human SGK2.

Reactivity

Human

Quality Control Testing

Standard curve using SGK2 293T overexpression lysate (non-denatured) as an analyte. Sandwich ELISA detection sensitivity ranging from approximately 729x to 3x dilution of the SGK2 293T overexpression lysate (non-denatured).

Supplied Product

Antibody pair set content:

1. Capture antibody: mouse monoclonal anti-SGK2 (100 ug)
2. Detection antibody: rabbit purified polyclonal anti-SGK2 (50 ug)

*Reagents are sufficient for at least 3-5 x 96 well plates using recommended protocols.

Storage Instruction

Store reagents of the antibody pair set at -20°C or lower. Please aliquot to avoid repeated freeze thaw cycle. Reagents should be returned to -20°C storage immediately after use.

Applications

- ELISA Pair (Transfected lysate)

[Protocol Download](#)

Gene Info — SGK2

Entrez GeneID [10110](#)**Gene Name** SGK2**Gene Alias** H-SGK2, dJ138B7.2**Gene Description** serum/glucocorticoid regulated kinase 2**Omim ID** [607589](#)**Gene Ontology** [Hyperlink](#)

Gene Summary This gene encodes a serine/threonine protein kinase. Although this gene product is similar to serum- and glucocorticoid-induced protein kinase (SGK), this gene is not induced by serum or glucocorticoids. This gene is induced in response to signals that activate phosphatidylinositol 3-kinase, which is also true for SGK. Two alternate transcripts encoding two different isoforms have been described. [provided by RefSeq]

Other Designations OTTHUMP00000031702|OTTHUMP00000031703|OTTHUMP00000031705