

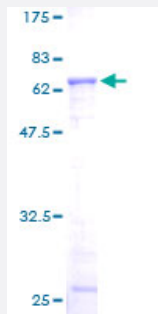
Full-Length

ACTR2 (Human) Recombinant Protein (P01)

Catalog # H00010097-P01

Size 25 ug, 10 ug

Applications



Specification

Product Description

Human ACTR2 full-length ORF (AAH14546.1, 1 a.a. - 394 a.a.) recombinant protein with GST-tag at N-terminal.

Sequence

MDSQGRKVVCDNGTGFVKCGYAGSNFPEHIFPALVGRPIIRSTTKVGNIEIKDLMVGDEASELRS
TLEVNYPMENGMRNWDDMKHLWDYTFGPEKLNIDTRNCKILLTEPPMNPTKNREKIVEVMFETYQ
FSGVYVAIQAVLTLYAQGLLTGVVVDSGDGVTHICPVYESFSLPHLTRRLDIAGRDITRYLIKLLLLRG
YAFNHSADFETVRMIKEKLCYVGYNIEQEQKLALETTVLVESYTLPDGRIIKVGGERFEAPEALFQP
HLINVEGVGVAELLFNTIQAADIDTRSEFYKHMLSGGSTMYPLPSRLERELKQLYLERVLKGDVE
KLSKFKIRIEDPPRRKHMVFLGGAVLADIMKDKDNFWMTRQEYQEKGVRLKLGVTVR

Host

Wheat Germ (in vitro)

Theoretical MW (kDa)

69.08

Interspecies Antigen Sequence

Rat (99)

Preparation Method

[in vitro wheat germ expression system](#)

Purification

Glutathione Sepharose 4 Fast Flow

Quality Control Testing

12.5% SDS-PAGE Stained with Coomassie Blue.

Storage Buffer

50 mM Tris-HCl, 10 mM reduced Glutathione, pH=8.0 in the elution buffer.

Storage Instruction

Store at -80°C. Aliquot to avoid repeated freezing and thawing.

Note

Best use within three months from the date of receipt of this protein.

Applications

- Enzyme-linked Immunoabsorbent Assay
- Western Blot (Recombinant protein)
- Antibody Production
- Protein Array

Gene Info — ACTR2

Entrez GeneID[10097](#)**GeneBank Accession#**[BC014546](#)**Protein Accession#**[AAH14546.1](#)**Gene Name**

ACTR2

Gene Alias

ARP2

Gene Description

ARP2 actin-related protein 2 homolog (yeast)

Omim ID[604221](#)**Gene Ontology**[Hyperlink](#)**Gene Summary**

The specific function of this gene has not yet been determined; however, the protein it encodes is known to be a major constituent of the ARP2/3 complex. This complex is located at the cell surface and is essential to cell shape and motility through lamellipodial actin assembly and protrusion. Two transcript variants encoding different isoforms have been found for this gene. [provided by RefSeq]

Other Designations

actin-related protein 2