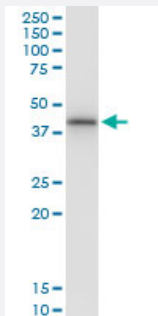


SNUPN (Human) IP-WB Antibody Pair

Catalog # H00010073-PW1

Size 1 Set

Applications



Immunoprecipitation of SNUPN transfected lysate using rabbit polyclonal anti-SNUPN and Protein A Magnetic Bead ([U0007](#)), and immunoblotted with mouse polyclonal anti-SNUPN.

Specification

Product Description	This IP-WB antibody pair set comes with one antibody for immunoprecipitation and another to detect the precipitated protein in western blot.
Reactivity	Human
Interspecies Antigen Sequence	Mouse (91); Rat (92)
Quality Control Testing	Immunoprecipitation-Western Blot (IP-WB) Immunoprecipitation of SNUPN transfected lysate using rabbit polyclonal anti-SNUPN and Protein A Magnetic Bead (U0007), and immunoblotted with mouse polyclonal anti-SNUPN.
Supplied Product	Antibody pair set content: 1. Antibody pair for IP: rabbit polyclonal anti-SNUPN (300 ul) 2. Antibody pair for WB: mouse polyclonal anti-SNUPN (50 ul)
Storage Instruction	Store reagents of the antibody pair set at -20°C or lower. Please aliquot to avoid repeated freeze thaw cycle. Reagents should be returned to -20°C storage immediately after use.

Applications

- Immunoprecipitation-Western Blot

[Protocol Download](#)

Gene Info — SNUPN

Entrez GeneID [10073](#)

Gene Name SNUPN

Gene Alias KPNBL, RNUT1, Snurportin1

Gene Description snurportin 1

Omim ID [607902](#)

Gene Ontology [Hyperlink](#)

Gene Summary The nuclear import of the spliceosomal snRNPs U1, U2, U4 and U5, is dependent on the presence of a complex nuclear localization signal. The latter is composed of the 5'-2,2,7-terminal trimethyl guanosine (m3G) cap structure of the U snRNA and the Sm core domain. The protein encoded by this gene interacts specifically with m3G-cap and functions as an snRNP-specific nuclear import receptor. Alternatively spliced transcript variants encoding the same protein have been identified for this gene. [provided by RefSeq]

Other Designations RNA, U transporter 1|SNURPORTIN-1