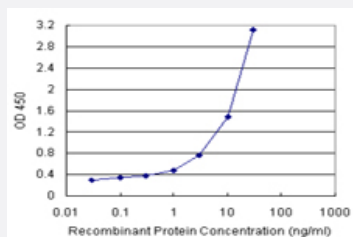


SNUPN (Human) Matched Antibody Pair

Catalog # H00010073-AP21

Size 1 Set

Applications



Sandwich ELISA detection sensitivity ranging from 0.3 ng/ml to 100 ng/ml.

Specification

Product Description	This antibody pair set comes with a matched antibody pair to detect and quantify the protein level of human SNUPN.
Reactivity	Human
Interspecies Antigen Sequence	Mouse (91); Rat (92)
Quality Control Testing	Standard curve using recombinant protein (H00010073-P01) as an analyte. Sandwich ELISA detection sensitivity ranging from 0.3 ng/ml to 100 ng/ml.
Supplied Product	Antibody pair set content: 1. Capture antibody: rabbit MaxPab® affinity purified polyclonal anti-SNUPN (100 ug) 2. Detection antibody: mouse polyclonal anti-SNUPN (40 ul) *Reagents are sufficient for at least 3-5 x 96 well plates using recommended protocols.
Storage Instruction	Store reagents of the antibody pair set at -20°C or lower. Please aliquot to avoid repeated freeze thaw cycle. Reagents should be returned to -20°C storage immediately after use.

Applications

- ELISA Pair (Recombinant protein)

[Protocol Download](#)

Gene Info — SNUPN

Entrez GeneID [10073](#)

Gene Name SNUPN

Gene Alias KPNBL, RNUT1, Snurportin1

Gene Description snurportin 1

Omim ID [607902](#)

Gene Ontology [Hyperlink](#)

Gene Summary The nuclear import of the spliceosomal snRNPs U1, U2, U4 and U5, is dependent on the presence of a complex nuclear localization signal. The latter is composed of the 5'-2,2,7-terminal trimethyl guanosine (m3G) cap structure of the U snRNA and the Sm core domain. The protein encoded by this gene interacts specifically with m3G-cap and functions as an snRNP-specific nuclear import receptor. Alternatively spliced transcript variants encoding the same protein have been identified for this gene. [provided by RefSeq]

Other Designations RNA, U transporter 1|SNURPORTIN-1