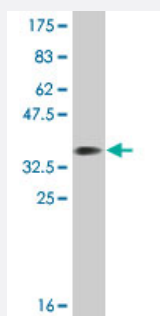


# DPP3 monoclonal antibody (M01A), clone 4D3

Catalog # H00010072-M01A

Size 200 uL

## Applications



Western Blot detection against Immunogen (34.65 KDa) .

## Specification

<b>Product Description</b>	Mouse monoclonal antibody raised against a partial recombinant DPP3.
<b>Immunogen</b>	DPP3 (NP_005691.2, 424 a.a. ~ 504 a.a) partial recombinant protein with GST tag. MW of the GST tag alone is 26 KDa.
<b>Sequence</b>	LTFLEDDDKDLYLWKGPSFDVQVGLHELLGHGSGKLFVQDEKGAFNFDQETVINPETGEQIQSW YRSGETWDSKFSTIAS
<b>Host</b>	Mouse
<b>Reactivity</b>	Human
<b>Interspecies Antigen Sequence</b>	Mouse (92); Rat (93)
<b>Isotype</b>	IgM Kappa
<b>Quality Control Testing</b>	Antibody Reactive Against Recombinant Protein. Western Blot detection against Immunogen (34.65 KDa) .
<b>Storage Buffer</b>	In ascites fluid
<b>Storage Instruction</b>	Store at -20°C or lower. Aliquot to avoid repeated freezing and thawing.

## Applications

- Western Blot (Recombinant protein)

[Protocol Download](#)

- ELISA

## Gene Info — DPP3

Entrez GeneID [10072](#)

GeneBank Accession# [NM\\_005700](#)

Protein Accession# [NP\\_005691.2](#)

Gene Name DPP3

Gene Alias DPPIII, FLJ11387, FLJ22331

Gene Description dipeptidyl-peptidase 3

Omim ID [606818](#)

Gene Ontology [Hyperlink](#)

**Gene Summary** This gene encodes a protein that is a member of the M49 family of metallopeptidases. This cytoplasmic protein binds a single zinc ion with its zinc-binding motif (HELLGH) and has post-proline dipeptidyl aminopeptidase activity, cleaving Xaa-Pro dipeptides from the N-termini of proteins. Increased activity of this protein is associated with endometrial and ovarian cancers. Alternate transcriptional splice variants have been characterized. [provided by RefSeq]

**Other Designations** dipeptidyl aminopeptidase III|dipeptidyl arylamidase III|dipeptidyl peptidase III|dipeptidylpeptidase 3|dipeptidylpeptidase III