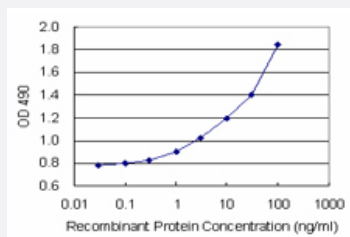


# SAE1 (Human) Matched Antibody Pair

Catalog # H00010055-AP11      Size 1 Set

## Applications



Sandwich ELISA detection sensitivity ranging from 0.3 ng/ml to 100 ng/ml.

## Specification

|                                      |  |
|--------------------------------------|--|
| <b>Product Description</b>           | This antibody pair set comes with a matched antibody pair to detect and quantify the protein level of human SAE1.  |
| <b>Reactivity</b>                    | Human  |
| <b>Interspecies Antigen Sequence</b> | Mouse (92); Rat (91)   |
| <b>Quality Control Testing</b>       | Standard curve using recombinant protein ( H00010055-P02 ) as an analyte.<br>Sandwich ELISA detection sensitivity ranging from 0.3 ng/ml to 100 ng/ml.   |
| <b>Supplied Product</b>              | Antibody pair set content:<br>1. Capture antibody: rabbit MaxPab® affinity purified polyclonal anti-SAE1 (100 ug)<br>2. Detection antibody: mouse monoclonal anti-SAE1, IgG1 Lambda (20 ug)<br>*Reagents are sufficient for at least 1-2 x 96 well plates using recommended protocols. |
| <b>Storage Instruction</b>           | Store reagents of the antibody pair set at -20°C or lower. Please aliquot to avoid repeated freeze thaw cycle. Reagents should be returned to -20°C storage immediately after use.   |

## Applications

- ELISA Pair (Recombinant protein)

[Protocol Download](#)

## Gene Info — SAE1

|                    |   |
|--------------------|---|
| Entrez GeneID      | <a href="#">10055</a>   |
| Gene Name          | SAE1  |
| Gene Alias         | AOS1, FLJ3091, HSPC140, SUA1  |
| Gene Description   | SUMO1 activating enzyme subunit 1   |
| Gene Ontology      | <a href="#">Hyperlink</a>   |
| Other Designations | SUMO-1 activating enzyme E1 N subunit SUMO-1 activating enzyme subunit 1 activator of SUMO 1 sentrin/SUMO-activating protein AOS1 ubiquitin-like protein SUMO-1 activating enzyme |

## Pathway

- [Ubiquitin mediated proteolysis](#)