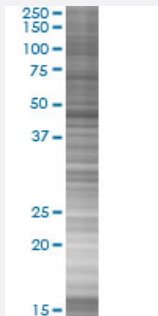


# AP1M2 293T Cell Transient Overexpression Lysate(Denatured)

Catalog # H00010053-T03

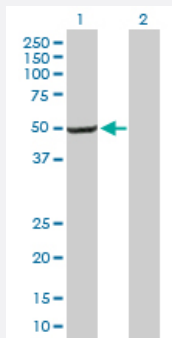
Size 100 uL

## Applications



### SDS-PAGE Gel

AP1M2 transfected lysate.



### Western Blot

Lane 1: AP1M2 transfected lysate ( 46.64 KDa)

Lane 2: Non-transfected lysate.

## Specification

Transfected Cell Line	293T
Plasmid	pCMV-AP1M2 full-length
Host	Human
Theoretical MW (kDa)	46.64
Interspecies Antigen Sequence	Mouse (96); Rat (97)

## Quality Control Testing

Transient overexpression cell lysate was tested with Anti-AP1M2 antibody ([H00010053-B01P](#)) by Western Blots.  
 SDS-PAGE Gel  
 AP1M2 transfected lysate.  
 Western Blot  
 Lane 1: AP1M2 transfected lysate ( 46.64 KDa)  
 Lane 2: Non-transfected lysate.

## Storage Buffer

1X Sample Buffer (50 mM Tris-HCl, 2% SDS, 10% glycerol, 300 mM 2-mercaptoethanol, 0.01% Bromophenol blue)

## Storage Instruction

Store at -80°C. Aliquot to avoid repeated freezing and thawing.

## Applications

- Western Blot

## Gene Info — AP1M2

### Entrez GeneID

[10053](#)

### GeneBank Accession#

[NM\\_005498](#)

### Protein Accession#

[NP\\_005489](#)

### Gene Name

AP1M2

### Gene Alias

AP1-mu2, HSMU1B, MU-1B, MU1B, mu2

### Gene Description

adaptor-related protein complex 1, mu 2 subunit

### Omim ID

[607309](#)

### Gene Ontology

[Hyperlink](#)

### Gene Summary

This gene encodes a subunit of the heterotetrameric adaptor-related protein complex 1 (AP-1), which belongs to the adaptor complexes medium subunits family. This protein is capable of interacting with tyrosine-based sorting signals. [provided by RefSeq]

### Other Designations

AP-mu chain family member mu1B|HA1 47 kDa subunit 2|clathrin assembly protein complex 1 medium chain 2|clathrin coat assembly protein AP47 2|clathrin coat associated protein AP47 2|clathrin-associated adaptor medium chain mu2|golgi adaptor AP-1 47 kDa pro

## Pathway

- [Lysosome](#)