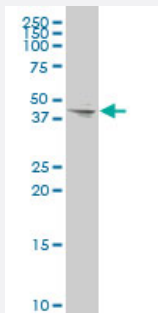


# GJA7 polyclonal antibody (A01)

Catalog # H00010052-A01

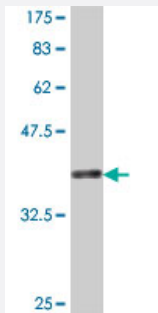
Size 50 uL

## Applications



### Western Blot (Cell lysate)

GJA7 polyclonal antibody (A01), Lot # 060608JCS1 Western Blot analysis of GJA7 expression in 293 ( Cat # L026V1 ).



Western Blot detection against Immunogen (37.11 kDa) .

## Specification

Product Description	Mouse polyclonal antibody raised against a partial recombinant GJA7.
Immunogen	GJA7 (NP_005488, 297 a.a. ~ 396 a.a) partial recombinant protein with GST tag.
Sequence	DQIQYTELSNAKIAYKQNKANTAQEEQQYGSHEENLPADLEALQREIRMAQERLDLAVQAYSHQNN PHGPREKKAKVGSKAGSNKSTASSKSGDGKTSVWI
Host	Mouse
Reactivity	Human
Interspecies Antigen Sequence	Mouse (92); Rat (92)

**Quality Control Testing**

Antibody Reactive Against Recombinant Protein.  
Western Blot detection against Immunogen (37.11 KDa) .

**Storage Buffer**

50 % glycerol

**Storage Instruction**

Store at -20°C or lower. Aliquot to avoid repeated freezing and thawing.

## Applications

- Western Blot (Cell lysate)

GJA7 polyclonal antibody (A01), Lot # 060608JCS1 Western Blot analysis of GJA7 expression in 293 ( Cat # L026V1 ).

[Protocol Download](#)

- Western Blot (Recombinant protein)

[Protocol Download](#)

- ELISA

## Gene Info — GJC1

**Entrez GeneID**

[10052](#)

**GeneBank Accession#**

[NM\\_005497](#)

**Protein Accession#**

[NP\\_005488](#)

**Gene Name**

GJC1

**Gene Alias**

CX45, DKFZp686P0738, GJA7

**Gene Description**

gap junction protein, gamma 1, 45kDa

**Omim ID**

[608655](#)

**Gene Ontology**

[Hyperlink](#)

**Gene Summary**

This gene is a member of the connexin gene family. The encoded protein is a component of gap junctions, which are composed of arrays of intercellular channels that provide a route for the diffusion of low molecular weight materials from cell to cell. Alternatively spliced transcript variants encoding the same isoform have been described. [provided by RefSeq]

**Other Designations**

connexin 45|gap junction protein, alpha 7, 45kDa

## Disease

- [Cardiovascular Diseases](#)
- [Diabetes Mellitus](#)
- [Edema](#)