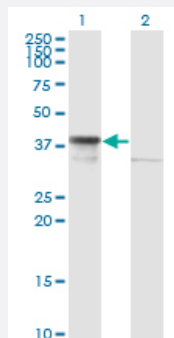


DNAJB6 monoclonal antibody (M02), clone 2D12-B9

Catalog # H00010049-M02

Size 100 ug

Applications

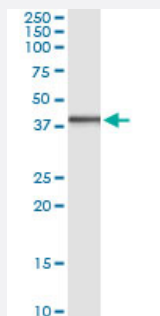


Western Blot (Transfected lysate)

Western Blot analysis of DNAJB6 expression in transfected 293T cell line by DNAJB6 monoclonal antibody (M02), clone 2D12-B9.

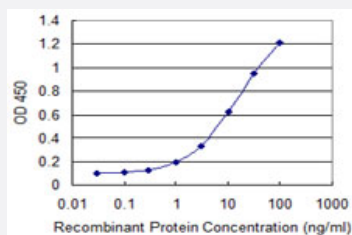
Lane 1: DNAJB6 transfected lysate (Predicted MW: 36.1 kDa).

Lane 2: Non-transfected lysate.



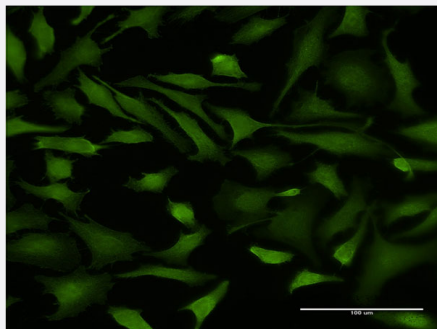
Immunoprecipitation

Immunoprecipitation of DNAJB6 transfected lysate using anti-DNAJB6 monoclonal antibody and Protein A Magnetic Bead, and immunoblotted with DNAJB6 MaxPab rabbit polyclonal antibody.



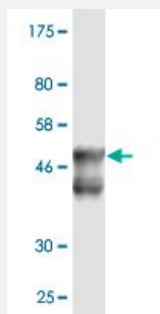
Sandwich ELISA (Recombinant protein)

Detection limit for recombinant GST tagged DNAJB6 is 0.1 ng/ml as a capture antibody.



Immunofluorescence

Immunofluorescence of monoclonal antibody to DNAJB6 on HeLa cell .
[antibody concentration 10 ug/ml]



Western Blot detection against Immunogen (52.25 KDa) .

Specification

Product Description	Mouse monoclonal antibody raised against a full-length recombinant DNAJB6.
Immunogen	DNAJB6 (AAH00177, 1 a.a. ~ 241 a.a) full-length recombinant protein with GST tag. MW of the GST tag alone is 26 KDa.
Sequence	MVDYYEVLGVQRHASPEDIKKAYRKLALKWHPDKNPENKEEAERKFKQVAEAYEVLSDAKKRDI YDKYGKEGLNGGGGGGSHFDSPFEFGFTFRNPDDVFREFFGGRDPFSFDFFEDPFEDFFGNRR GPRGSRSGTGSSFFSAFSGFPSFGSGFSSFDTGFTSFGSLGHGGLTSFSSTSFSGSGMGNFKSI STSTKMVNGRKITTKRIVENQERVEVEEDGQLKSLTINGKEQLRLDNK
Host	Mouse
Reactivity	Human
Interspecies Antigen Sequence	Mouse (75); Rat (78)
Isotype	IgG1 Kappa
Quality Control Testing	Antibody Reactive Against Recombinant Protein. Western Blot detection against Immunogen (52.25 KDa) .
Storage Buffer	In 1x PBS, pH 7.4
Storage Instruction	Store at -20°C or lower. Aliquot to avoid repeated freezing and thawing.

Applications

- Western Blot (Transfected lysate)

Western Blot analysis of DNAJB6 expression in transfected 293T cell line by DNAJB6 monoclonal antibody (M02), clone 2D12-B9.

Lane 1: DNAJB6 transfected lysate (Predicted MW: 36.1 KDa).

Lane 2: Non-transfected lysate.

[Protocol Download](#)

- Western Blot (Recombinant protein)

[Protocol Download](#)

- Immunoprecipitation

Immunoprecipitation of DNAJB6 transfected lysate using anti-DNAJB6 monoclonal antibody and Protein A Magnetic Bead, and immunoblotted with DNAJB6 MaxPab rabbit polyclonal antibody.

[Protocol Download](#)

- Sandwich ELISA (Recombinant protein)

Detection limit for recombinant GST tagged DNAJB6 is 0.1 ng/ml as a capture antibody.

[Protocol Download](#)

- ELISA

- Immunofluorescence

Immunofluorescence of monoclonal antibody to DNAJB6 on HeLa cell . [antibody concentration 10 ug/ml]

Gene Info — DNAJB6

Entrez GeneID	10049
GeneBank Accession#	BC000177
Protein Accession#	AAH00177
Gene Name	DNAJB6
Gene Alias	DJ4, DKFZp566D0824, DnaJ, FLJ42837, HHDJ1, HSJ-2, HSJ2, MGC1152, MGC117297, MRJ, MSJ-1

Gene Description	DnaJ (Hsp40) homolog, subfamily B, member 6
Omim ID	611332
Gene Ontology	Hyperlink
Gene Summary	<p>This gene encodes a member of the DNAJ protein family. DNAJ family members are characterized by a highly conserved amino acid stretch called the 'J-domain' and function as one of the two major classes of molecular chaperones involved in a wide range of cellular events, such as protein folding and oligomeric protein complex assembly. This family member may also play a role in polyglutamine aggregation in specific neurons. Alternative splicing of this gene results in multiple transcript variants; however, not all variants have been fully described. [provided by RefSeq]</p>
Other Designations	DnaJ-like 2 protein heat shock protein J2