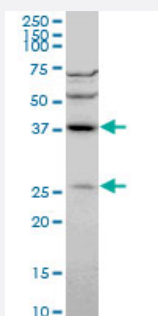


DNAJB6 monoclonal antibody (M01), clone 2C11-C1

Catalog # H00010049-M01

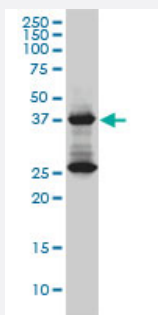
Size 100 ug

Applications



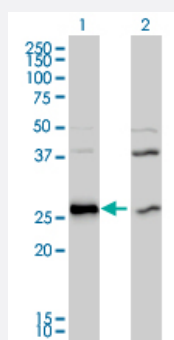
Western Blot (Cell lysate)

DNAJB6 monoclonal antibody (M01), clone 2C11-C1. Western Blot analysis of DNAJB6 expression in C32 (Cat # L002V1).



Western Blot (Cell lysate)

DNAJB6 monoclonal antibody (M01), clone 2C11-C1 Western Blot analysis of DNAJB6 expression in Jurkat (Cat # L017V1).



Western Blot (Transfected lysate)

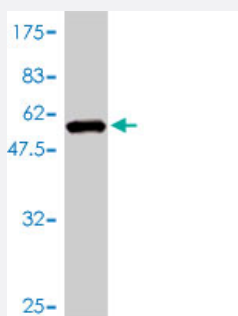
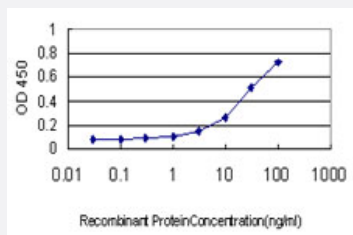
Western Blot analysis of DNAJB6 expression in transfected 293T cell line by DNAJB6 monoclonal antibody (M01), clone 2C11-C1.

Lane 1: DNAJB6 transfected lysate(27 KDa).

Lane 2: Non-transfected lysate.

Sandwich ELISA (Recombinant protein)

Detection limit for recombinant GST tagged DNAJB6 is approximately 1ng/ml as a capture antibody.



Western Blot detection against Immunogen (52.25 KDa) .

Specification

Product Description	Mouse monoclonal antibody raised against a full length recombinant DNAJB6.
Immunogen	DNAJB6 (AAH00177, 1 a.a. ~ 241 a.a) full-length recombinant protein with GST tag. MW of the GST tag alone is 26 KDa.
Sequence	MVDYYEVLGVQRHASPEDIKKAYRKLALKWHPDKNPENKEEAERKFKQVAEAYEVLSDAKKRDI YDKYGKEGLNGGGGGGSHFDSPFEFGFTFRNPDDVFREFFGGRDPFSFDFFEDPFEDFFGNRR GPRGSRSGTGSGFFSAFSGFPSFGSGFSSFDTGFTSFGSLGHGGLTSFSSTSFSGSGMGNFKSI STSTKMVNGRKITTKRIVENGQERVEVEEDGQLKSLTINGKEQLLRLDNK
Host	Mouse
Reactivity	Human
Interspecies Antigen Sequence	Mouse (75); Rat (78)
Isotype	IgG1 kappa
Quality Control Testing	Antibody Reactive Against Recombinant Protein. Western Blot detection against Immunogen (52.25 KDa) .
Storage Buffer	In 1x PBS, pH 7.4
Storage Instruction	Store at -20°C or lower. Aliquot to avoid repeated freezing and thawing.

Applications

- Western Blot (Cell lysate)

DNAJB6 monoclonal antibody (M01), clone 2C11-C1. Western Blot analysis of DNAJB6 expression in C32 (Cat # L002V1).

[Protocol Download](#)

- Western Blot (Cell lysate)

DNAJB6 monoclonal antibody (M01), clone 2C11-C1 Western Blot analysis of DNAJB6 expression in Jurkat (Cat # L017V1).

[Protocol Download](#)

- Western Blot (Transfected lysate)

Western Blot analysis of DNAJB6 expression in transfected 293T cell line by DNAJB6 monoclonal antibody (M01), clone 2C11-C1.

Lane 1: DNAJB6 transfected lysate(27 KDa).

Lane 2: Non-transfected lysate.

[Protocol Download](#)

- Western Blot (Recombinant protein)

[Protocol Download](#)

- Sandwich ELISA (Recombinant protein)

Detection limit for recombinant GST tagged DNAJB6 is approximately 1ng/ml as a capture antibody.

[Protocol Download](#)

- ELISA

Gene Info — DNAJB6

Entrez GeneID	10049
GeneBank Accession#	BC000177
Protein Accession#	AAH00177
Gene Name	DNAJB6
Gene Alias	DJ4, DKFZp566D0824, DnaJ, FLJ42837, HHDJ1, HSJ-2, HSJ2, MGC1152, MGC117297, MRJ, MSJ-1

Gene Description	DnaJ (Hsp40) homolog, subfamily B, member 6
Omim ID	611332
Gene Ontology	Hyperlink
Gene Summary	This gene encodes a member of the DNAJ protein family. DNAJ family members are characterized by a highly conserved amino acid stretch called the 'J-domain' and function as one of the two major classes of molecular chaperones involved in a wide range of cellular events, such as protein folding and oligomeric protein complex assembly. This family member may also play a role in polyglutamine aggregation in specific neurons. Alternative splicing of this gene results in multiple transcript variants; however, not all variants have been fully described. [provided by RefSeq]
Other Designations	DnaJ-like 2 protein heat shock protein J2

Publication Reference

- [The Short Isoform of DNAJB6 Protects against 1-Methyl-4-phenylpyridinium Ion-Induced Apoptosis in LN18 Cells via Inhibiting Both ROS Formation and Mitochondrial Membrane Potential Loss.](#)

Hong YM, Hong Y, Choi YG, Yeo S, Jin SH, Lee SW, Sung B, Lee SH, Jung H, Lim S.

Amino Acids 2017 Feb; 2017:7982389.

Application: IF, WB-Tr, Human, LN18 cells

- [Interaction between urokinase receptor and heat shock protein MRJ enhances cell adhesion.](#)

Edo De Bock C, Lin Z, Mekawy AH, Byrne JA, Wang Y.

International Journal of Oncology 2010 May; 36(5):1155.

Application: WB-Ce, Human, MDA-MB-231 cells