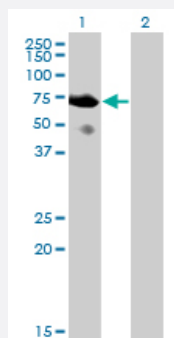


SH2D3A monoclonal antibody (M04), clone 3B11

Catalog # H00010045-M04

Size 100 ug

Applications

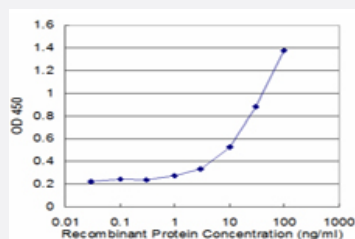


Western Blot (Transfected lysate)

Western Blot analysis of SH2D3A expression in transfected 293T cell line by SH2D3A monoclonal antibody (M04), clone 3B11.

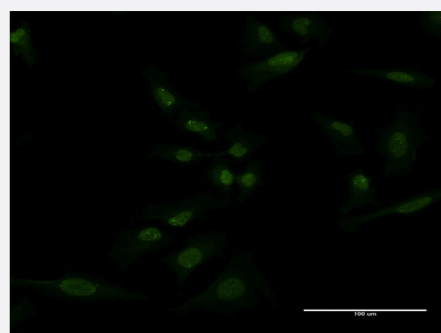
Lane 1: SH2D3A transfected lysate(63.1 KDa).

Lane 2: Non-transfected lysate.



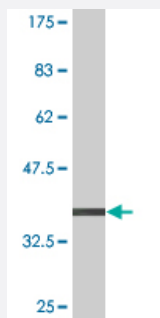
Sandwich ELISA (Recombinant protein)

Detection limit for recombinant GST tagged SH2D3A is approximately 1ng/ml as a capture antibody.



Immunofluorescence

Immunofluorescence of monoclonal antibody to SH2D3A on HeLa cell .
[antibody concentration 10 ug/ml]



Western Blot detection against Immunogen (38.5 KDa) .

Specification

Product Description	Mouse monoclonal antibody raised against a partial recombinant SH2D3A.
Immunogen	SH2D3A (NP_005481, 460 a.a. ~ 575 a.a) partial recombinant protein with GST tag. MW of the GST tag alone is 26 KDa.
Sequence	GAGPCDPGEVALPHVAPMVRLLLEGEEVAGPLDESCERLLRTLHGARMVRDAPKFRKVAAQRLRGFRPNPELREALTTGFVRRLLWGSRGAGAPRAERFEKFQRVLGVLQSQRLEPD
Host	Mouse
Reactivity	Human
Isotype	IgG2a Kappa
Quality Control Testing	Antibody Reactive Against Recombinant Protein. Western Blot detection against Immunogen (38.5 KDa) .
Storage Buffer	In 1x PBS, pH 7.4
Storage Instruction	Store at -20°C or lower. Aliquot to avoid repeated freezing and thawing.

Applications

- Western Blot (Transfected lysate)

Western Blot analysis of SH2D3A expression in transfected 293T cell line by SH2D3A monoclonal antibody (M04), clone 3B11.

Lane 1: SH2D3A transfected lysate(63.1 KDa).

Lane 2: Non-transfected lysate.

[Protocol Download](#)

- Western Blot (Recombinant protein)

[Protocol Download](#)

- Sandwich ELISA (Recombinant protein)

Detection limit for recombinant GST tagged SH2D3A is approximately 1ng/ml as a capture antibody.

[Protocol Download](#)

- ELISA

- Immunofluorescence

Immunofluorescence of monoclonal antibody to SH2D3A on HeLa cell . [antibody concentration 10 ug/ml]

Gene Info — SH2D3A

Entrez GeneID	10045
---------------	-----------------------

GeneBank Accession#	NM_005490
---------------------	---------------------------

Protein Accession#	NP_005481
--------------------	---------------------------

Gene Name	SH2D3A
-----------	--------

Gene Alias	NSP1
------------	------

Gene Description	SH2 domain containing 3A
------------------	--------------------------

Omim ID	604721
---------	------------------------

Gene Ontology	Hyperlink
---------------	---------------------------

Other Designations	SH2 domain-containing 3A novel SH2-containing protein 1
--------------------	---------------------------------------------------------