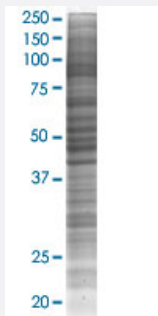


TOM1 293T Cell Transient Overexpression Lysate(Denatured)

Catalog # H00010043-T02

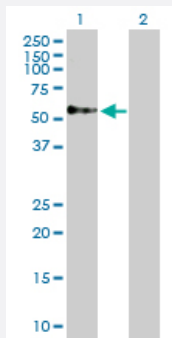
Size 100 uL

Applications



SDS-PAGE Gel

TOM1 transfected lysate.



Western Blot

Lane 1: TOM1 transfected lysate (53.80 KDa)

Lane 2: Non-transfected lysate.

Specification

Transfected Cell Line	293T
Plasmid	pCMV-TOM1 full-length
Host	Human
Theoretical MW (kDa)	53.8
Interspecies Antigen Sequence	Mouse (84); Rat (88)

Quality Control Testing

Transient overexpression cell lysate was tested with Anti-TOM1 antibody ([H00010043-D01P](#)) by Western Blots.
SDS-PAGE Gel
TOM1 transfected lysate.
Western Blot
Lane 1: TOM1 transfected lysate (53.80 KDa)
Lane 2: Non-transfected lysate.

Storage Buffer

1X Sample Buffer (50 mM Tris-HCl, 2% SDS, 10% glycerol, 300 mM 2-mercaptoethanol, 0.01% Bromophenol blue)

Storage Instruction

Store at -80°C. Aliquot to avoid repeated freezing and thawing.

Applications

- Western Blot

Gene Info — TOM1

Entrez GeneID[10043](#)**GeneBank Accession#**[NM_005488.1](#)**Protein Accession#**[NP_005479.1](#)**Gene Name**

TOM1

Gene Alias

FLJ33404

Gene Description

target of myb1 (chicken)

Omim ID[604700](#)**Gene Ontology**[Hyperlink](#)**Gene Summary**

This gene was identified as a target of the v-myb oncogene. The encoded protein shares its N-terminal domain in common with proteins associated with vesicular trafficking at the endosome. It is recruited to the endosomes by its interaction with endofin. Several alternatively spliced transcript variants encoding different isoforms have been found for this gene. [provided by RefSeq]

Other Designations

OTTHUMP00000028777|target of myb 1|target of myb1

Disease

- [Bipolar Disorder](#)
- [Genetic Predisposition to Disease](#)
- [Schizophrenia](#)