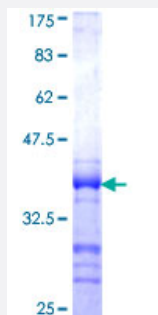


TOM1 (Human) Recombinant Protein (Q01)

Catalog # H00010043-Q01

Size 25 ug, 10 ug

Applications



Specification

Product Description	Human TOM1 partial ORF (NP_005479, 394 a.a. - 491 a.a.) recombinant protein with GST-tag at N-terminal.
Sequence	GLAGALDARQQSTGAIPVTQACLMEDIEQWLSTDVGNDAEEPKGVTSEEFDKFLEERAKAADRL PNLSSPSAEGPPGPPSGPAPRKKTQEKDDMLFA
Host	Wheat Germ (in vitro)
Theoretical MW (kDa)	36.52
Interspecies Antigen Sequence	Mouse (84); Rat (88)
Preparation Method	in vitro wheat germ expression system
Purification	Glutathione Sepharose 4 Fast Flow
Quality Control Testing	12.5% SDS-PAGE Stained with Coomassie Blue.
Storage Buffer	50 mM Tris-HCl, 10 mM reduced Glutathione, pH=8.0 in the elution buffer.
Storage Instruction	Store at -80°C. Aliquot to avoid repeated freezing and thawing.
Note	Best use within three months from the date of receipt of this protein.

Applications

- Enzyme-linked Immunoabsorbent Assay
- Western Blot (Recombinant protein)
- Antibody Production
- Protein Array

Gene Info — TOM1

Entrez GeneID [10043](#)

GeneBank Accession# [NM_005488](#)

Protein Accession# [NP_005479](#)

Gene Name TOM1

Gene Alias FLJ33404

Gene Description target of myb1 (chicken)

Omim ID [604700](#)

Gene Ontology [Hyperlink](#)

Gene Summary This gene was identified as a target of the v-myb oncogene. The encoded protein shares its N-terminal domain in common with proteins associated with vesicular trafficking at the endosome. It is recruited to the endosomes by its interaction with endofin. Several alternatively spliced transcript variants encoding different isoforms have been found for this gene. [provided by RefSeq]

Other Designations OTTHUMP00000028777|target of myb 1|target of myb1

Disease

- [Bipolar Disorder](#)
- [Genetic Predisposition to Disease](#)
- [Schizophrenia](#)