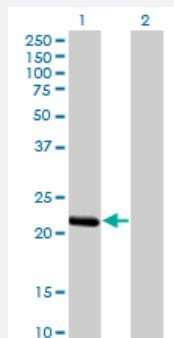


# BCL2L10 monoclonal antibody (M03), clone 1B11

Catalog # H00010017-M03

Size 100 ug

## Applications

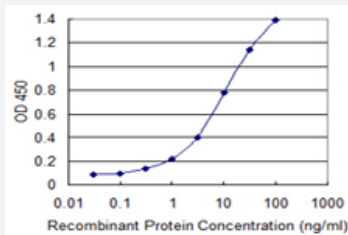


### Western Blot (Transfected lysate)

Western Blot analysis of BCL2L10 expression in transfected 293T cell line by BCL2L10 monoclonal antibody (M03), clone 1B11.

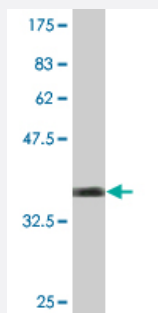
Lane 1: BCL2L10 transfected lysate (23.2 KDa).

Lane 2: Non-transfected lysate.



### Sandwich ELISA (Recombinant protein)

Detection limit for recombinant GST tagged BCL2L10 is 0.1 ng/ml as a capture antibody.



Western Blot detection against Immunogen (35.86 KDa).

## Specification

### Product Description

Mouse monoclonal antibody raised against a partial recombinant BCL2L10.

<b>Immunogen</b>	BCL2L10 (NP_065129, 1 a.a. ~ 92 a.a) partial recombinant protein with GST tag. MW of the GST tag alone is 26 KDa.
<b>Sequence</b>	MVDQLRERTTMADPLRRETELLADYLGVCAREPGTPEPAPSTPEAAVLRSAARLRQIHRSFFS AYLGYPGNRFELVALMADSVLSDSPGP
<b>Host</b>	Mouse
<b>Reactivity</b>	Human
<b>Interspecies Antigen Sequence</b>	Mouse (48); Rat (46)
<b>Isotype</b>	IgG2b Kappa
<b>Quality Control Testing</b>	Antibody Reactive Against Recombinant Protein. Western Blot detection against Immunogen (35.86 KDa) .
<b>Storage Buffer</b>	In 1x PBS, pH 7.4
<b>Storage Instruction</b>	Store at -20°C or lower. Aliquot to avoid repeated freezing and thawing.

## Applications

- Western Blot (Transfected lysate)

Western Blot analysis of BCL2L10 expression in transfected 293T cell line by BCL2L10 monoclonal antibody (M03), clone 1B11.

Lane 1: BCL2L10 transfected lysate(23.2 KDa).

Lane 2: Non-transfected lysate.

[Protocol Download](#)

- Western Blot (Recombinant protein)

[Protocol Download](#)

- Sandwich ELISA (Recombinant protein)

Detection limit for recombinant GST tagged BCL2L10 is 0.1 ng/ml as a capture antibody.

[Protocol Download](#)

- ELISA

## Gene Info — BCL2L10

Entrez GeneID	<a href="#">10017</a>
GeneBank Accession#	<a href="#">NM_020396</a>
Protein Accession#	<a href="#">NP_065129</a>
Gene Name	BCL2L10
Gene Alias	BCL-B, Boo, Diva, MGC129810, MGC129811
Gene Description	BCL2-like 10 (apoptosis facilitator)
Omim ID	<a href="#">606910</a>
Gene Ontology	<a href="#">Hyperlink</a>
Gene Summary	<p>The protein encoded by this gene belongs to the BCL-2 protein family. BCL-2 family members form hetero- or homodimers and act as anti- or pro-apoptotic regulators that are involved in a wide variety of cellular activities. The protein encoded by this gene contains conserved BH4, BH1 and BH2 domains. This protein can interact with other members of BCL-2 protein family including BCL2, BCL2L1/BCL-X(L), and BAX. Overexpression of this gene has been shown to suppress cell apoptosis possibly through the prevention of cytochrome C release from the mitochondria, and thus activating caspase-3 activation. The mouse counterpart of this protein is found to interact with Apaf1 and forms a protein complex with Caspase 9, which suggests the involvement of this protein in APAF1 and CASPASE 9 related apoptotic pathway. [provided by RefSeq]</p>
Other Designations	-

## Disease

- [Cardiovascular Diseases](#)
- [Diabetes Mellitus](#)
- [Edema](#)
- [Genetic Predisposition to Disease](#)
- [Hematologic Diseases](#)
- [Hodgkin Disease](#)
- [Lymphoma](#)
- [Lymphoproliferative Disorders](#)
- [Occupational Diseases](#)
- [Waldenstrom Macroglobulinemia](#)

- [Werner syndrome](#)