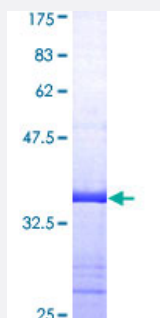


PDCD6 (Human) Recombinant Protein (Q01)

Catalog # H00010016-Q01

Size 25 ug, 10 ug

Applications



Specification

Product Description	Human PDCD6 partial ORF (AAH12384, 92 a.a. - 191 a.a.) recombinant protein with GST-tag at N-terminal.
Sequence	ITDWQNVFRTYDRDNSGMIDKNELKQALSGFGYRLSDQFHDILIRKFDRQGGRGQIAFDDFIQGCMV QRLTDIFRRYDTDQDGIQVSYEQYLSMVFSIV
Host	Wheat Germ (in vitro)
Theoretical MW (kDa)	36.63
Interspecies Antigen Sequence	Rat (98)
Preparation Method	in vitro wheat germ expression system
Purification	Glutathione Sepharose 4 Fast Flow
Quality Control Testing	12.5% SDS-PAGE Stained with Coomassie Blue.
Storage Buffer	50 mM Tris-HCl, 10 mM reduced Glutathione, pH=8.0 in the elution buffer.
Storage Instruction	Store at -80°C. Aliquot to avoid repeated freezing and thawing.
Note	Best use within three months from the date of receipt of this protein.

Applications

- Enzyme-linked Immunoabsorbent Assay
- Western Blot (Recombinant protein)
- Antibody Production
- Protein Array

Gene Info — PDCD6

Entrez GeneID [10016](#)

GeneBank Accession# [BC012384](#)

Protein Accession# [AAH12384](#)

Gene Name PDCD6

Gene Alias ALG-2, FLJ46208, MGC111017, MGC119050, MGC9123, PEF1B

Gene Description programmed cell death 6

Omim ID [601057](#)

Gene Ontology [Hyperlink](#)

Gene Summary This gene encodes a calcium-binding protein belonging to the penta-EF-hand protein family. Calcium binding is important for homodimerization and for conformational changes required for binding to other protein partners. This gene product participates in T cell receptor-, Fas-, and glucocorticoid-induced programmed cell death. In mice deficient for this gene product, however, apoptosis was not blocked suggesting this gene product is functionally redundant. [provided by RefSeq]

Other Designations apoptosis-linked gene 2|apoptosis-linked gene-2