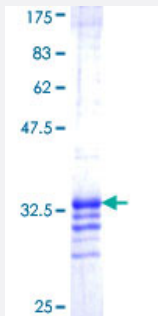


ABI1 (Human) Recombinant Protein (Q01)

Catalog # H00010006-Q01

Size 25 ug, 10 ug

Applications



Specification

Product Description	Human ABI1 partial ORF (NP_001012770, 185 a.a. - 238 a.a.) recombinant protein with GST-tag at N-terminal.
Sequence	GTLGRNTPYKTLEPVKPPTVPNDYMTSPARLGSQLHSPGRTASLNQRPRTHSGSS
Host	Wheat Germ (in vitro)
Theoretical MW (kDa)	31.68
Interspecies Antigen Sequence	Mouse (100); Rat (100)
Preparation Method	in vitro wheat germ expression system
Purification	Glutathione Sepharose 4 Fast Flow
Quality Control Testing	12.5% SDS-PAGE Stained with Coomassie Blue.
Storage Buffer	50 mM Tris-HCl, 10 mM reduced Glutathione, pH=8.0 in the elution buffer.
Storage Instruction	Store at -80°C. Aliquot to avoid repeated freezing and thawing.
Note	Best use within three months from the date of receipt of this protein.

Applications

- Enzyme-linked Immunoabsorbent Assay
- Western Blot (Recombinant protein)
- Antibody Production
- Protein Array

Gene Info — ABI1

Entrez GeneID [10006](#)

GeneBank Accession# [NM_001012752](#)

Protein Accession# [NP_001012770](#)

Gene Name ABI1

Gene Alias ABI-1, E3B1, NAP1BP, SSH3BP, SSH3BP1

Gene Description abl-interactor 1

Omim ID [603050](#)

Gene Ontology [Hyperlink](#)

Gene Summary The protein encoded by this gene has been found to form a complex with EPS8 and SOS1, and is thought to be involved in the transduction of signals from Ras to Rac. In addition, the encoded protein may play a role in the regulation of EGF-induced Erk pathway activation as well as cytoskeletal reorganization and EGFR signaling. Several transcript variants encoding multiple isoforms have been found for this gene. [provided by RefSeq]

Other Designations Abelson interactor 1|Abl-interactor protein 1 long|OTTHUMP00000019352|OTTHUMP00000019355|eps8 binding protein|interactor protein AblBP4|nap1 binding protein|spectrin SH3 domain binding protein 1

Disease

- [Alzheimer Disease](#)

- [Genetic Predisposition to Disease](#)
- [Kidney Failure](#)