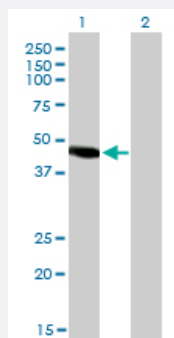


NR2E3 monoclonal antibody (M01), clone 2A12

Catalog # H00010002-M01

Size 100 ug

Applications

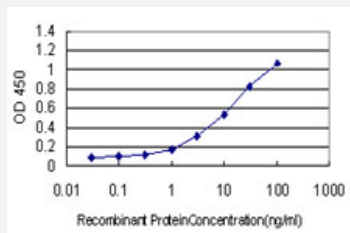


Western Blot (Transfected lysate)

Western Blot analysis of NR2E3 expression in transfected 293T cell line by NR2E3 monoclonal antibody (M01), clone 2A12.

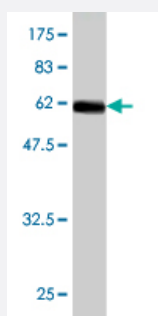
Lane 1: NR2E3 transfected lysate (44.7 KDa).

Lane 2: Non-transfected lysate.



Sandwich ELISA (Recombinant protein)

Detection limit for recombinant GST tagged NR2E3 is approximately 0.3ng/ml as a capture antibody.



Western Blot detection against Immunogen (61.16 KDa) .

Specification

Product Description

Mouse monoclonal antibody raised against a full length recombinant NR2E3.

Immunogen	NR2E3 (AAH41421, 1 a.a. ~ 322 a.a) full-length recombinant protein with GST tag. MW of the GST tag alone is 26 KDa.
Sequence	MCPVDKAHRNQCQACRLKKCLQAGMNQDAVQNERQPRSTAQVHLDSESNTERPESLVAPP APAGRSPRGPTPMSAARALGHHFMASLITAETCAKLEPEDADENIDVTSNDPEFPSSPYSSSSP CGLDSIHETSARLLFMAVKWAKNLPVFSSLPFRDQVILLEEAWSELFLLGAIQWSLPLDSCPLLAP PEASAAGGAQGRLTLASMETRVLQETISRFRALAVDPTEFACMKALVLFKPETRGLKDPEHVEAL QDQSQVMLSQHSKAHPSQPVRFGKLLLLLPSLRFTAERIELLFFRKTIGNTPMEKLLCDMFKN
Host	Mouse
Reactivity	Human
Isotype	IgG1
Quality Control Testing	Antibody Reactive Against Recombinant Protein. Western Blot detection against Immunogen (61.16 KDa) .
Storage Buffer	In 1x PBS, pH 7.4
Storage Instruction	Store at -20°C or lower. Aliquot to avoid repeated freezing and thawing.

Applications

- Western Blot (Transfected lysate)

Western Blot analysis of NR2E3 expression in transfected 293T cell line by NR2E3 monoclonal antibody (M01), clone 2A12.

Lane 1: NR2E3 transfected lysate(44.7 KDa).

Lane 2: Non-transfected lysate.

[Protocol Download](#)

- Western Blot (Recombinant protein)

[Protocol Download](#)

- Sandwich ELISA (Recombinant protein)

Detection limit for recombinant GST tagged NR2E3 is approximately 0.3ng/ml as a capture antibody.

[Protocol Download](#)

- ELISA

Gene Info — NR2E3

Entrez GeneID	10002
GeneBank Accession#	BC041421
Protein Accession#	AAH41421
Gene Name	NR2E3
Gene Alias	ESCS, MGC49976, PNR, RNR, RP37, rd7
Gene Description	nuclear receptor subfamily 2, group E, member 3
Omim ID	268100 604485 611131
Gene Ontology	Hyperlink
Gene Summary	<p>This protein is part of a large family of nuclear receptor transcription factors involved in signaling pathways. Nuclear receptors have been shown to regulate pathways involved in embryonic development, as well as in maintenance of proper cell function in adults. Members of this family are characterized by discrete domains that function in DNA and ligand binding. This gene encodes a retinal nuclear receptor that is a ligand-dependent transcription factor. Defects in this gene are a cause of enhanced S cone syndrome. Alternatively spliced transcript variants encoding different isoforms have been identified. [provided by RefSeq]</p>
Other Designations	photoreceptor-specific nuclear receptor retina-specific nuclear receptor

Disease

- [Retinal Diseases](#)
- [Retinitis Pigmentosa](#)