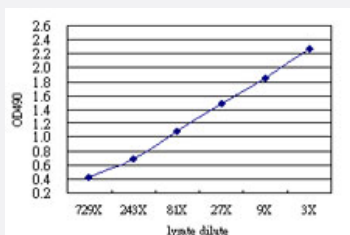


MED6 (Human) Matched Antibody Pair

Catalog # H00010001-AP61

Size 1 Set

Applications



Sandwich ELISA detection sensitivity ranging from approximately 729x to 3x dilution of the MED6 293T overexpression lysate (non-denatured).

Specification

Product Description

This antibody pair set comes with a matched antibody pair to detect and quantify the protein level of human MED6.

Reactivity

Human

Quality Control Testing

Standard curve using MED6 293T overexpression lysate (non-denatured) as an analyte. Sandwich ELISA detection sensitivity ranging from approximately 729x to 3x dilution of the MED6 293T overexpression lysate (non-denatured).

Supplied Product

Antibody pair set content:
 1. Capture antibody: mouse monoclonal anti-MED6 (100 ug)
 2. Detection antibody: rabbit MaxPab® affinity purified polyclonal anti-MED6 (50 ug)
 *Reagents are sufficient for at least 3-5 x 96 well plates using recommended protocols.

Storage Instruction

Store reagents of the antibody pair set at -20°C or lower. Please aliquot to avoid repeated freeze thaw cycle. Reagents should be returned to -20°C storage immediately after use.

Applications

- ELISA Pair (Transfected lysate)

[Protocol Download](#)

Gene Info — MED6

Entrez GeneID	10001
Gene Name	MED6
Gene Alias	NY-REN-28
Gene Description	mediator complex subunit 6
Omim ID	602984
Gene Ontology	Hyperlink
Gene Summary	subunit 6 homolog
Other Designations	mediator of RNA polymerase II transcription, subunit 6 homolog

Disease

- [Disease Progression](#)
- [Disease Susceptibility](#)
- [HIV Infections](#)