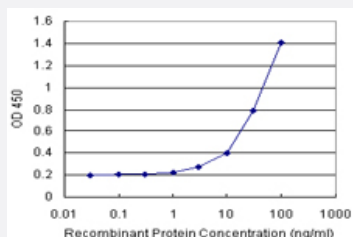


# MED6 (Human) Matched Antibody Pair

Catalog # H00010001-AP21

Size 1 Set

## Applications



Sandwich ELISA detection sensitivity ranging from 3 ng/ml to 100 ng/ml.

## Specification

### Product Description

This antibody pair set comes with a matched antibody pair to detect and quantify the protein level of human MED6.

### Reactivity

Human

### Quality Control Testing

Standard curve using recombinant protein ( H00010001-P01 ) as an analyte.  
Sandwich ELISA detection sensitivity ranging from 3 ng/ml to 100 ng/ml.

### Supplied Product

Antibody pair set content:

1. Capture antibody: rabbit MaxPab® affinity purified polyclonal anti-MED6 (100 ug)
  2. Detection antibody: mouse purified polyclonal anti-MED6 (20 ug)
- \*Reagents are sufficient for at least 1-2 x 96 well plates using recommended protocols.

### Storage Instruction

Store reagents of the antibody pair set at -20°C or lower. Please aliquot to avoid repeated freeze thaw cycle. Reagents should be returned to -20°C storage immediately after use.

## Applications

- ELISA Pair (Recombinant protein)

[Protocol Download](#)

## Gene Info — MED6

**Entrez GeneID** [10001](#)**Gene Name** MED6**Gene Alias** NY-REN-28**Gene Description** mediator complex subunit 6**Omim ID** [602984](#)**Gene Ontology** [Hyperlink](#)**Gene Summary** subunit 6 homolog**Other Designations** mediator of RNA polymerase II transcription, subunit 6 homolog

## Disease

- [Disease Progression](#)
- [Disease Susceptibility](#)
- [HIV Infections](#)