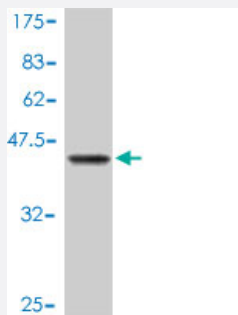


# DMTF1 polyclonal antibody (A01)

Catalog # H00009988-A01

Size 50 uL

## Applications



Western Blot detection against Immunogen (37.11 KDa) .

## Specification

<b>Product Description</b>	Mouse polyclonal antibody raised against a partial recombinant DMTF1.
<b>Immunogen</b>	DMTF1 (NP_066968, 661 a.a. ~ 760 a.a) partial recombinant protein with GST tag.
<b>Sequence</b>	KQEESPSDLASAYVTEGLESPTIEEQVDQTIDDETILVPSPHGFIQASDVIDTESVLPLTTLTDPILQ HHQEESNIIGSSLGSPVSEDSKDVEDLVNCH
<b>Host</b>	Mouse
<b>Reactivity</b>	Human
<b>Interspecies Antigen Sequence</b>	Mouse (93)
<b>Quality Control Testing</b>	Antibody Reactive Against Recombinant Protein. Western Blot detection against Immunogen (37.11 KDa) .
<b>Storage Buffer</b>	50 % glycerol
<b>Storage Instruction</b>	Store at -20°C or lower. Aliquot to avoid repeated freezing and thawing.

## Applications

- Western Blot (Recombinant protein)

[Protocol Download](#)

- ELISA

## Gene Info — DMTF1

Entrez GeneID [9988](#)

GeneBank Accession# [NM\\_021145](#)

Protein Accession# [NP\\_066968](#)

Gene Name DMTF1

Gene Alias DMP1, DMTF, FLJ25188, FLJ41265, FLJ76054, hDMP1

Gene Description cyclin D binding myb-like transcription factor 1

Omim ID [608491](#)

Gene Ontology [Hyperlink](#)

**Gene Summary** This gene encodes a transcription factor that contains a cyclin D-binding domain, three central Myb-like repeats, and two flanking acidic transactivation domains at the N- and C-termini. The encoded protein is induced by the oncogenic Ras signaling pathway and functions as a tumor suppressor by activating the transcription of ARF and thus the ARF-p53 pathway to arrest cell growth or induce apoptosis. It also activates the transcription of aminopeptidase N and may play a role in hematopoietic cell differentiation. The transcriptional activity of this protein is regulated by binding of D-cyclins. This gene is hemizygotously deleted in approximately 40% of human non-small-cell lung cancer and is a potential prognostic and gene-therapy target for non-small-cell lung cancer. Multiple transcript variants encoding different isoforms have been found for this gene. [provided by RefSeq]

**Other Designations** cyclin D-binding Myb-like protein 1

## Disease

- [Breast cancer](#)
- [Breast Neoplasms](#)