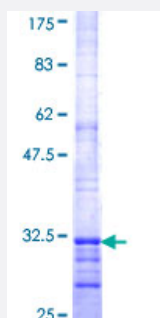


# RCE1 (Human) Recombinant Protein (Q01)

Catalog # H00009986-Q01

Size 25 ug, 10 ug

## Applications



## Specification

Product Description	Human RCE1 partial ORF ( NP_005124, 133 a.a. - 182 a.a.) recombinant protein with GST-tag at N-terminal.
Sequence	QLSMDPCDLADGLKVVLAPRSWARCLTDMRWLRNQVIAPLTEELVFRAC
Host	Wheat Germ (in vitro)
Theoretical MW (kDa)	31.24
Interspecies Antigen Sequence	Mouse (98); Rat (94)
Preparation Method	<a href="#">in vitro wheat germ expression system</a>
Purification	Glutathione Sepharose 4 Fast Flow
Quality Control Testing	12.5% SDS-PAGE Stained with Coomassie Blue.
Storage Buffer	50 mM Tris-HCl, 10 mM reduced Glutathione, pH=8.0 in the elution buffer.
Storage Instruction	Store at -80°C. Aliquot to avoid repeated freezing and thawing.
Note	Best use within three months from the date of receipt of this protein.

## Applications

- Enzyme-linked Immunoabsorbent Assay
- Western Blot (Recombinant protein)
- Antibody Production
- Protein Array

## Gene Info — RCE1

Entrez GeneID	<a href="#">9986</a>
GeneBank Accession#	<a href="#">NM_005133</a>
Protein Accession#	<a href="#">NP_005124</a>
Gene Name	RCE1
Gene Alias	FACE2, RCE1A, RCE1B
Gene Description	RCE1 homolog, prenyl protein peptidase (S. cerevisiae)
Omim ID	<a href="#">605385</a>
Gene Ontology	<a href="#">Hyperlink</a>
Gene Summary	This gene encodes an integral membrane protein which is classified as a member of the metalloproteinase family. This enzyme is thought to function in the maintenance and processing of CAAX-type prenylated proteins. [provided by RefSeq]
Other Designations	RCE1 homolog, prenyl protein protease farnesylated protein-converting enzyme 2 prenyl protein peptidase RCE1 prenyl protein-specific endoprotease 2