

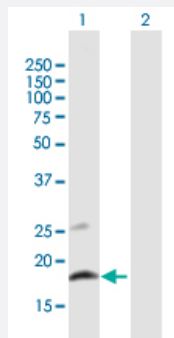
MaxPab®

CLEC2B purified MaxPab mouse polyclonal antibody (B01P)

Catalog # H00009976-B01P

Size 50 ug

Applications



Western Blot (Transfected lysate)

Western Blot analysis of CLEC2B expression in transfected 293T cell line ([H00009976-T01](#)) by CLEC2B MaxPab polyclonal antibody.

Lane 1: CLEC2B transfected lysate(16.5 KDa).

Lane 2: Non-transfected lysate.

Specification

Product Description	Mouse polyclonal antibody raised against a full-length human CLEC2B protein.
Immunogen	CLEC2B (AAH05254, 1 a.a. ~ 149 a.a) full-length human protein.
Sequence	MMTKHKKCFIVGVLTITNIITLVKLTRDSQSLCPYDWIGFQNKCYFYSKEEGDWNSSKYNCSQHA DLTIIDNIEETNFLRRYKCSSDHWIGLKMAKNRTGQWVDGATFTKSFGMRGSEGCAYLSDDGAAT ARCYTERKWICKKRIH
Host	Mouse
Reactivity	Human
Quality Control Testing	Antibody reactive against mammalian transfected lysate.
Storage Buffer	In 1x PBS, pH 7.4
Storage Instruction	Store at -20°C or lower. Aliquot to avoid repeated freezing and thawing.

Applications

- Western Blot (Transfected lysate)

Western Blot analysis of CLEC2B expression in transfected 293T cell line ([H00009976-T01](#)) by CLEC2B MaxPab polyclonal antibody.

Lane 1: CLEC2B transfected lysate(16.5 KDa).

Lane 2: Non-transfected lysate.

[Protocol Download](#)

Gene Info — CLEC2B

Entrez GeneID [9976](#)

GeneBank Accession# [BC005254](#)

Protein Accession# [AAH05254](#)

Gene Name CLEC2B

Gene Alias AICL, CLECSF2, HP10085, IFNRG1

Gene Description C-type lectin domain family 2, member B

Omim ID [603242](#)

Gene Ontology [Hyperlink](#)

Gene Summary This gene encodes a member of the C-type lectin/C-type lectin-like domain (CTL/CTLD) superfamily. Members of this family share a common protein fold and have diverse functions, such as cell adhesion, cell-cell signalling, glycoprotein turnover, and roles in inflammation and immune response. The encoded type 2 transmembrane protein may function as a cell activation antigen. An alternative splice variant has been described but its full-length sequence has not been determined. This gene is closely linked to other CTL/CTLD superfamily members on chromosome 12p13 in the natural killer gene complex region. [provided by RefSeq]

Other Designations C-type (calcium dependent, carbohydrate-recognition domain) lectin, superfamily member 2 (activation-induced)|C-type lectin, superfamily member 2|IFN-alpha2b-inducing related protein 1|activation-induced C-type lectin