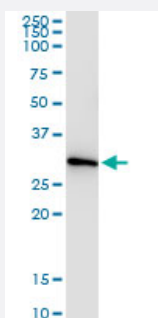


CCS (Human) IP-WB Antibody Pair

Catalog # H00009973-PW2

Size 1 Set

Applications



Immunoprecipitation of CCS transfected lysate using mouse monoclonal anti-CCS and Protein A Magnetic Bead ([U0007](#)), and immunoblotted with mouse monoclonal anti-CCS.

Specification

Product Description	This IP-WB antibody pair set comes with one antibody for immunoprecipitation and another to detect the precipitated protein in western blot.
Reactivity	Human
Quality Control Testing	Immunoprecipitation-Western Blot (IP-WB) Immunoprecipitation of CCS transfected lysate using mouse monoclonal anti-CCS and Protein A Magnetic Bead (U0007), and immunoblotted with mouse monoclonal anti-CCS.
Supplied Product	Antibody pair set content: 1. Antibody pair for IP: mouse monoclonal anti-CCS (300 ug) 2. Antibody pair for WB: mouse monoclonal anti-CCS (50 ug)
Storage Instruction	Store reagents of the antibody pair set at -20°C or lower. Please aliquot to avoid repeated freeze thaw cycle. Reagents should be returned to -20°C storage immediately after use.

Applications

- Immunoprecipitation-Western Blot

[Protocol Download](#)

Gene Info — CCS

Entrez GeneID	9973
Gene Name	CCS
Gene Alias	MGC138260
Gene Description	copper chaperone for superoxide dismutase
Omim ID	603864
Gene Ontology	Hyperlink
Gene Summary	Copper chaperone for superoxide dismutase specifically delivers Cu to copper/zinc superoxide dismutase and may activate copper/zinc superoxide dismutase through direct insertion of the Cu cofactor. [provided by RefSeq]
Other Designations	-

Pathway

- [Amyotrophic lateral sclerosis \(ALS\)](#)

Disease

- [Alzheimer disease](#)
- [Cognition](#)