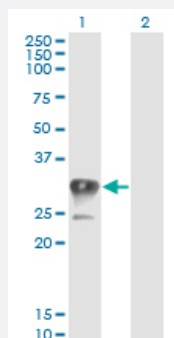


# CCS monoclonal antibody (M03), clone 1E2

Catalog # H00009973-M03

Size 100 ug

## Applications

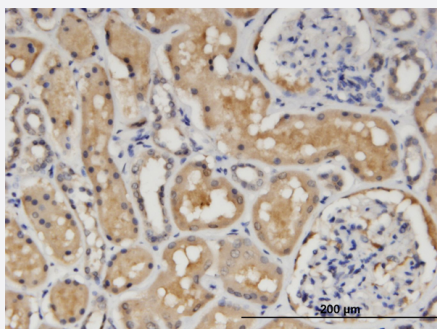


### Western Blot (Transfected lysate)

Western Blot analysis of CCS expression in transfected 293T cell line by CCS monoclonal antibody (M03), clone 1E2.

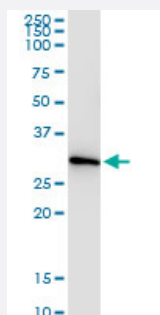
Lane 1: CCS transfected lysate (Predicted MW: 29 KDa).

Lane 2: Non-transfected lysate.



### Immunohistochemistry (Formalin/PFA-fixed paraffin-embedded sections)

Immunoperoxidase of monoclonal antibody to CCS on formalin-fixed paraffin-embedded human kidney. [antibody concentration 1.5 ug/ml]

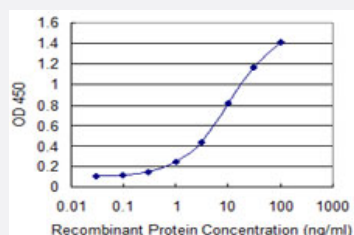


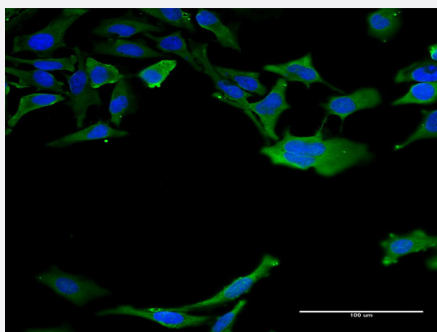
### Immunoprecipitation

Immunoprecipitation of CCS transfected lysate using anti-CCS monoclonal antibody and Protein A Magnetic Bead, and immunoblotted with CCS monoclonal antibody.

### Sandwich ELISA (Recombinant protein)

Detection limit for recombinant GST tagged CCS is 0.1 ng/ml as a capture antibody.





## Immunofluorescence

Immunofluorescence of monoclonal antibody to CCS on HeLa cell . [antibody concentration 40 ug/ml]



Western Blot detection against Immunogen (36.74 KDa) .

## Specification

<b>Product Description</b>	Mouse monoclonal antibody raised against a partial recombinant CCS.
<b>Immunogen</b>	CCS (NP_005116, 175 a.a. ~ 274 a.a) partial recombinant protein with GST tag. MW of the GST tag alone is 26 KDa.
<b>Sequence</b>	ADGRAIFRMEDEQLKVWDVIGRSLIIDEGEDDLGRGGHPLSKITGNSGERLACGIIARSAGLFQNPK QICSCDGLTIWEERGRPIAGKGRKESAQPPAHL
<b>Host</b>	Mouse
<b>Reactivity</b>	Human
<b>Isotype</b>	IgG1 Kappa
<b>Quality Control Testing</b>	Antibody Reactive Against Recombinant Protein. Western Blot detection against Immunogen (36.74 KDa) .
<b>Storage Buffer</b>	In 1x PBS, pH 7.4
<b>Storage Instruction</b>	Store at -20°C or lower. Aliquot to avoid repeated freezing and thawing.

## Applications

- Western Blot (Transfected lysate)

Western Blot analysis of CCS expression in transfected 293T cell line by CCS monoclonal antibody (M03), clone 1E2.

Lane 1: CCS transfected lysate (Predicted MW: 29 KDa).

Lane 2: Non-transfected lysate.

[Protocol Download](#)

- Western Blot (Recombinant protein)

[Protocol Download](#)

- Immunohistochemistry (Formalin/PFA-fixed paraffin-embedded sections)

Immunoperoxidase of monoclonal antibody to CCS on formalin-fixed paraffin-embedded human kidney. [antibody concentration 1.5 ug/ml]

[Protocol Download](#)

- Immunoprecipitation

Immunoprecipitation of CCS transfected lysate using anti-CCS monoclonal antibody and Protein A Magnetic Bead, and immunoblotted with CCS monoclonal antibody.

[Protocol Download](#)

- Sandwich ELISA (Recombinant protein)

Detection limit for recombinant GST tagged CCS is 0.1 ng/ml as a capture antibody.

[Protocol Download](#)

- ELISA

- Immunofluorescence

Immunofluorescence of monoclonal antibody to CCS on HeLa cell . [antibody concentration 40 ug/ml]

## Gene Info — CCS

Entrez GeneID	<a href="#">9973</a>
GeneBank Accession#	<a href="#">NM_005125</a>
Protein Accession#	<a href="#">NP_005116</a>
Gene Name	CCS
Gene Alias	MGC138260

Gene Description	copper chaperone for superoxide dismutase
Omim ID	<a href="#">603864</a>
Gene Ontology	<a href="#">Hyperlink</a>
Gene Summary	Copper chaperone for superoxide dismutase specifically delivers Cu to copper/zinc superoxide dismutase and may activate copper/zinc superoxide dismutase through direct insertion of the Cu cofactor. [provided by RefSeq]
Other Designations	-

## Publication Reference

- [Impaired Copper and Iron Metabolism in Blood Cells and Muscles of Patients Affected by Copper Deficiency Myeloneuropathy.](#)

Spinazzi M, Sghirlanzoni A, Salviati L, Angelini C.

Neuropathology and Applied Neurobiology 2014 Dec; 40(7):888.

Application: WB-Ti, Human, Muscles

## Pathway

- [Amyotrophic lateral sclerosis \(ALS\)](#)

## Disease

- [Alzheimer disease](#)
- [Cognition](#)