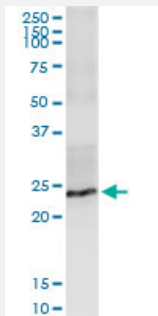


FGF19 (Human) IP-WB Antibody Pair

Catalog # H00009965-PW2

Size 1 Set

Applications



Immunoprecipitation of FGF19 transfected lysate using rabbit polyclonal anti-FGF19 and Protein A Magnetic Bead ([U0007](#)), and immunoblotted with mouse purified polyclonal anti-FGF19.

Specification

Product Description	This IP-WB antibody pair set comes with one antibody for immunoprecipitation and another to detect the precipitated protein in western blot.
Reactivity	Human
Interspecies Antigen Sequence	Mouse (50); Rat (52)
Quality Control Testing	Immunoprecipitation-Western Blot (IP-WB) Immunoprecipitation of FGF19 transfected lysate using rabbit polyclonal anti-FGF19 and Protein A Magnetic Bead (U0007), and immunoblotted with mouse purified polyclonal anti-FGF19.
Supplied Product	Antibody pair set content: 1. Antibody pair for IP: rabbit polyclonal anti-FGF19 (300 ul) 2. Antibody pair for WB: mouse purified polyclonal anti-FGF19 (50 ug)
Storage Instruction	Store reagents of the antibody pair set at -20°C or lower. Please aliquot to avoid repeated freeze thaw cycle. Reagents should be returned to -20°C storage immediately after use.

Applications

- Immunoprecipitation-Western Blot

[Protocol Download](#)

Gene Info — FGF19

Entrez GeneID [9965](#)

Gene Name FGF19

Gene Alias -

Gene Description fibroblast growth factor 19

Omim ID [603891](#)

Gene Ontology [Hyperlink](#)

Gene Summary The protein encoded by this gene is a member of the fibroblast growth factor (FGF) family. FGF family members possess broad mitogenic and cell survival activities, and are involved in a variety of biological processes including embryonic development cell growth, morphogenesis, tissue repair, tumor growth and invasion. This growth factor is a high affinity, heparin dependent ligand for FGFFR4. Expression of this gene was detected only in fetal but not adult brain tissue. Synergistic interaction of the chick homolog and Wnt-8c has been shown to be required for initiation of inner ear development. [provided by RefSeq]

Other Designations -

Pathway

- [MAPK signaling pathway](#)
- [Melanoma](#)
- [Pathways in cancer](#)
- [Regulation of actin cytoskeleton](#)