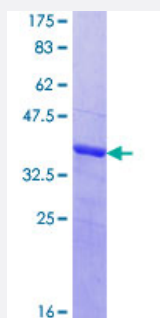


MAGEC1 (Human) Recombinant Protein (Q03)

Catalog # H00009947-Q03

Size 25 ug, 10 ug

Applications



Specification

Product Description	Human MAGEC1 partial ORF (NP_005453.2, 848 a.a. - 918 a.a.) recombinant protein with GST-tag at N-terminal.
Sequence	ESPLQSPVISFSSSTSLSPFSEESSPVDEYTSSSDTLLESDSLTDSESLIESEPLFTYTLDEKVD ELARF
Host	Wheat Germ (in vitro)
Theoretical MW (kDa)	33.44
Preparation Method	in vitro wheat germ expression system
Purification	Glutathione Sepharose 4 Fast Flow
Quality Control Testing	12.5% SDS-PAGE Stained with Coomassie Blue.
Storage Buffer	50 mM Tris-HCl, 10 mM reduced Glutathione, pH=8.0 in the elution buffer.
Storage Instruction	Store at -80°C. Aliquot to avoid repeated freezing and thawing.
Note	Best use within three months from the date of receipt of this protein.

Applications

- Enzyme-linked Immunoabsorbent Assay
- Western Blot (Recombinant protein)
- Antibody Production
- Protein Array

Gene Info — MAGEC1

Entrez GeneID [9947](#)

GeneBank Accession# [NM_005462](#)

Protein Accession# [NP_005453.2](#)

Gene Name MAGEC1

Gene Alias CT7, MAGE-C1, MGC39366

Gene Description melanoma antigen family C, 1

Omim ID [300223](#)

Gene Ontology [Hyperlink](#)

Gene Summary This gene is a member of the melanoma antigen gene (MAGE) family. The proteins of this family are tumor-specific antigens that can be recognized by autologous cytolytic T lymphocytes. This protein contains a large number of unique short repetitive sequences in front of the MAGE-homologous sequence, and therefore is about 800 aa longer than the other MAGE proteins. [provided by RefSeq]

Other Designations OTTHUMP00000024183