

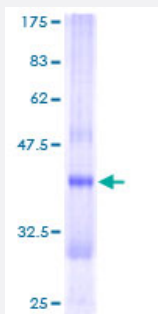
Full-Length

## CRYZL1 (Human) Recombinant Protein (P01)

Catalog # H00009946-P01

Size 25 ug, 10 ug

### Applications



### Specification

|                               |   |
|-------------------------------|---|
| Product Description           | Human CRYZL1 full-length ORF ( AAH13155, 1 a.a. - 113 a.a.) recombinant protein with GST-tag at N-terminal.         |
| Sequence                      | MKGLYFQQSSTDEEITFVFQEKEDLPVTEDNFVKLQVKACALSQINTKLLAEMKMKDLFPVGREI<br>AGVLDVGSKVSFFQPDDEVVEVLSRLGAVAHVCNPSTLGGQGGRIT |
| Host                          | Wheat Germ (in vitro)   |
| Theoretical MW (kDa)          | 38.17   |
| Interspecies Antigen Sequence | Mouse (90); Rat (89)  |
| Preparation Method            | <a href="#">in vitro wheat germ expression system</a>   |
| Purification                  | Glutathione Sepharose 4 Fast Flow   |
| Quality Control Testing       | 12.5% SDS-PAGE Stained with Coomassie Blue.   |
| Storage Buffer                | 50 mM Tris-HCl, 10 mM reduced Glutathione, pH=8.0 in the elution buffer.  |
| Storage Instruction           | Store at -80°C. Aliquot to avoid repeated freezing and thawing.   |
| Note                          | Best use within three months from the date of receipt of this protein.  |

## Applications

- Enzyme-linked Immunoabsorbent Assay
- Western Blot (Recombinant protein)
- Antibody Production
- Protein Array

## Gene Info — CRYZL1

|                     |  |
|---------------------|--|
| Entrez GeneID       | <a href="#">9946</a>   |
| GeneBank Accession# | <a href="#">BC013155</a>   |
| Protein Accession#  | <a href="#">AAH13155</a>   |
| Gene Name           | CRYZL1   |
| Gene Alias          | 4P11, QOH-1  |
| Gene Description    | crystallin, zeta (quinone reductase)-like 1  |
| Omim ID             | <a href="#">603920</a>   |
| Gene Ontology       | <a href="#">Hyperlink</a>  |
| Gene Summary        | This gene encodes a protein that has sequence similarity to zeta crystallin, also known as quinone oxidoreductase. This zeta crystallin-like protein also contains an NAD(P)H binding site. Alternatively spliced transcript variants have been observed but their full-length nature has not been completely determined. [provided by RefSeq] |
| Other Designations  | OTTHUMP00000068719 crystallin, zeta-like 1 quinone reductase-like 1  |