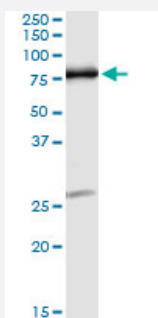


# OXR1 (Human) IP-WB Antibody Pair

Catalog # H00009943-PW5

Size 1 Set

## Applications



Immunoprecipitation of OXR1 transfected lysate using mouse monoclonal anti-OXR1 and Protein A Magnetic Bead ([U0007](#)), and immunoblotted with rabbit polyclonal anti-OXR1.

## Specification

<b>Product Description</b>	This IP-WB antibody pair set comes with one antibody for immunoprecipitation and another to detect the precipitated protein in western blot.
<b>Reactivity</b>	Human
<b>Interspecies Antigen Sequence</b>	Mouse (95); Rat (95)
<b>Quality Control Testing</b>	Immunoprecipitation-Western Blot (IP-WB) Immunoprecipitation of OXR1 transfected lysate using mouse monoclonal anti-OXR1 and Protein A Magnetic Bead ( <a href="#">U0007</a> ), and immunoblotted with rabbit polyclonal anti-OXR1.
<b>Supplied Product</b>	Antibody pair set content: 1. Antibody pair for IP: mouse monoclonal anti-OXR1 (300 ug) 2. Antibody pair for WB: rabbit polyclonal anti-OXR1 (50 ul)
<b>Storage Instruction</b>	Store reagents of the antibody pair set at -20°C or lower. Please aliquot to avoid repeated freeze thaw cycle. Reagents should be returned to -20°C storage immediately after use.

## Applications

- Immunoprecipitation-Western Blot

[Protocol Download](#)

## Gene Info — OXSR1

Entrez GeneID	<a href="#">9943</a>
Gene Name	OXSR1
Gene Alias	KIAA1101, OSR1
Gene Description	oxidative-stress responsive 1
Omim ID	<a href="#">604046</a>
Gene Ontology	<a href="#">Hyperlink</a>
Gene Summary	The product of this gene belongs to the Ser/Thr protein kinase family of proteins. It regulates down stream kinases in response to environmental stress, and may play a role in regulating the actin cytoskeleton. [provided by RefSeq]
Other Designations	-