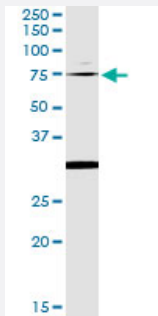


OXR1 (Human) IP-WB Antibody Pair

Catalog # H00009943-PW3

Size 1 Set

Applications



Immunoprecipitation of OXR1 transfected lysate using mouse monoclonal anti-OXR1 and Protein A Magnetic Bead ([U0007](#)), and immunoblotted with rabbit polyclonal anti-OXR1.

Specification

Product Description	This IP-WB antibody pair set comes with one antibody for immunoprecipitation and another to detect the precipitated protein in western blot.
Reactivity	Human
Interspecies Antigen Sequence	Mouse (95); Rat (95)
Quality Control Testing	Immunoprecipitation-Western Blot (IP-WB) Immunoprecipitation of OXR1 transfected lysate using mouse monoclonal anti-OXR1 and Protein A Magnetic Bead (U0007), and immunoblotted with rabbit polyclonal anti-OXR1.
Supplied Product	Antibody pair set content: 1. Antibody pair for IP: mouse monoclonal anti-OXR1 (300 ug) 2. Antibody pair for WB: rabbit polyclonal anti-OXR1 (50 ul)
Storage Instruction	Store reagents of the antibody pair set at -20°C or lower. Please aliquot to avoid repeated freeze thaw cycle. Reagents should be returned to -20°C storage immediately after use.

Applications

- Immunoprecipitation-Western Blot

[Protocol Download](#)

Gene Info — OXSR1

Entrez GeneID	9943
Gene Name	OXSR1
Gene Alias	KIAA1101, OSR1
Gene Description	oxidative-stress responsive 1
Omim ID	604046
Gene Ontology	Hyperlink
Gene Summary	The product of this gene belongs to the Ser/Thr protein kinase family of proteins. It regulates down stream kinases in response to environmental stress, and may play a role in regulating the actin cytoskeleton. [provided by RefSeq]
Other Designations	-