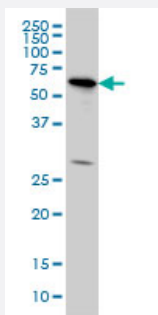


# OXSR1 monoclonal antibody (M10), clone 3F6

Catalog # H00009943-M10

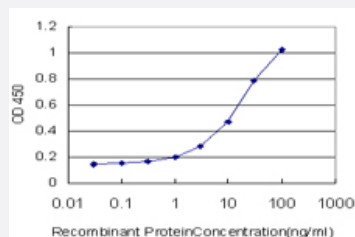
Size 100 ug

## Applications



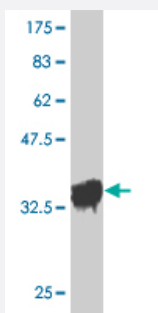
### Western Blot (Cell lysate)

OXSR1 monoclonal antibody (M10), clone 3F6 Western Blot analysis of OXSR1 expression in HeLa ( Cat # L013V1 ).



### Sandwich ELISA (Recombinant protein)

Detection limit for recombinant GST tagged OXSR1 is approximately 1ng/ml as a capture antibody.



Western Blot detection against Immunogen (36.63 kDa) .

## Specification

### Product Description

Mouse monoclonal antibody raised against a partial recombinant OXSR1.

<b>Immunogen</b>	OXSR1 (AAH08726.1, 351 a.a. ~ 450 a.a) partial recombinant protein with GST tag. MW of the GST tag alone is 26 KDa.
<b>Sequence</b>	KAAISQLRSPRVKESISNSELFPTTDPVGTLLQVPEQISAHLPQPAGQIATQPTQVSLPPTAEPAKT AQUALSSGSGSQETKIPISLVLRLRNSKKELNDI
<b>Host</b>	Mouse
<b>Reactivity</b>	Human
<b>Interspecies Antigen Sequence</b>	Mouse (95); Rat (95)
<b>Isotype</b>	IgG3 Kappa
<b>Quality Control Testing</b>	Antibody Reactive Against Recombinant Protein. Western Blot detection against Immunogen (36.63 KDa) .
<b>Storage Buffer</b>	In 1x PBS, pH 7.4
<b>Storage Instruction</b>	Store at -20°C or lower. Aliquot to avoid repeated freezing and thawing.

## Applications

- Western Blot (Cell lysate)

OXSR1 monoclonal antibody (M10), clone 3F6 Western Blot analysis of OXSR1 expression in HeLa ( Cat # L013V1 ).

[Protocol Download](#)

- Western Blot (Recombinant protein)

[Protocol Download](#)

- Sandwich ELISA (Recombinant protein)

Detection limit for recombinant GST tagged OXSR1 is approximately 1ng/ml as a capture antibody.

[Protocol Download](#)

- ELISA

## Gene Info — OXSR1

Entrez GeneID [9943](#)

GeneBank Accession#	<a href="#">BC008726.1</a>
Protein Accession#	<a href="#">AAH08726.1</a>
Gene Name	OCSR1
Gene Alias	KIAA1101, OSR1
Gene Description	oxidative-stress responsive 1
Omim ID	<a href="#">604046</a>
Gene Ontology	<a href="#">Hyperlink</a>
Gene Summary	The product of this gene belongs to the Ser/Thr protein kinase family of proteins. It regulates down stream kinases in response to environmental stress, and may play a role in regulating the actin cytoskeleton. [provided by RefSeq]
Other Designations	-

## Publication Reference

- [Impaired degradation of WNK1 and WNK4 kinases causes PHAI in mutant KLHL3 knock-in mice.](#)

Susa K, Sohara E, Rai T, Zeniya M, Mori Y, Mori T, Chiga M, Nomura N, Nishida H, Takahashi D, Isobe K, Inoue Y, Takeishi K, Takeda N, Sasaki S, Uchida S.

Human Molecular Genetics 2014 Oct; 23(19):5052.

Application: WB-Ti, Mouse, Kidney