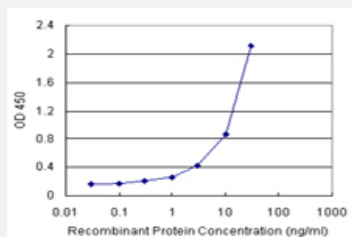


# OXSR1 (Human) Matched Antibody Pair

Catalog # H00009943-AP11

Size 1 Set

## Applications



Sandwich ELISA detection sensitivity ranging from 0.3 ng/ml to 100 ng/ml.

## Specification

<b>Product Description</b>	This antibody pair set comes with a matched antibody pair to detect and quantify the protein level of human OXSR1.
<b>Reactivity</b>	Human
<b>Interspecies Antigen Sequence</b>	Mouse (95); Rat (95)
<b>Quality Control Testing</b>	Standard curve using recombinant protein ( H00009943-P01 ) as an analyte. Sandwich ELISA detection sensitivity ranging from 0.3 ng/ml to 100 ng/ml.
<b>Supplied Product</b>	Antibody pair set content: 1. Capture antibody: rabbit MaxPab® affinity purified polyclonal anti-OXSR1 (100 ug) 2. Detection antibody: mouse monoclonal anti-OXSR1, IgG1 Kappa (20 ug) *Reagents are sufficient for at least 1-2 x 96 well plates using recommended protocols.
<b>Storage Instruction</b>	Store reagents of the antibody pair set at -20°C or lower. Please aliquot to avoid repeated freeze thaw cycle. Reagents should be returned to -20°C storage immediately after use.

## Applications

- ELISA Pair (Recombinant protein)

[Protocol Download](#)

## Gene Info — OXSR1

Entrez GeneID	<a href="#">9943</a>
Gene Name	OXSR1
Gene Alias	KIAA1101, OSR1
Gene Description	oxidative-stress responsive 1
Omim ID	<a href="#">604046</a>
Gene Ontology	<a href="#">Hyperlink</a>
Gene Summary	The product of this gene belongs to the Ser/Thr protein kinase family of proteins. It regulates down stream kinases in response to environmental stress, and may play a role in regulating the actin cytoskeleton. [provided by RefSeq]
Other Designations	-