

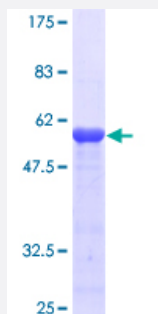
Full-Length

RBM8A (Human) Recombinant Protein (P01)

Catalog # H00009939-P01

Size 10 ug, 25 ug

Applications



Specification

Product Description	Human RBM8A full-length ORF (AAH17088, 1 a.a. - 174 a.a.) recombinant protein with GST-tag at N-terminal.
Sequence	MADVLDLHEAGGEDFAMDEDGDESIHKLKEKAKKRKGRGFGSEEGSRARMREDYDSVEQDGD EPGPQRSVEGWILSVTGVHEEATEEDIHDKFAEYGEIKNIHLNLDRTGYLKGYTLVEYETYKEAQA AMEGLNGQDLMGQPISVDWCFVRGPPKGRRGRRRSRSPDRRRR
Host	Wheat Germ (in vitro)
Theoretical MW (kDa)	44.88
Preparation Method	in vitro wheat germ expression system
Purification	Glutathione Sepharose 4 Fast Flow
Quality Control Testing	12.5% SDS-PAGE Stained with Coomassie Blue.
Storage Buffer	50 mM Tris-HCl, 10 mM reduced Glutathione, pH=8.0 in the elution buffer.
Storage Instruction	Store at -80°C. Aliquot to avoid repeated freezing and thawing.
Note	Best use within three months from the date of receipt of this protein.

Applications

- Enzyme-linked Immunoabsorbent Assay
- Western Blot (Recombinant protein)
- Antibody Production
- Protein Array

Gene Info — RBM8A

Entrez GeneID [9939](#)

GeneBank Accession# [BC017088](#)

Protein Accession# [AAH17088](#)

Gene Name RBM8A

Gene Alias BOV-1A, BOV-1B, BOV-1C, MDS014, RBM8, RBM8B, Y14, ZNRP, ZRNP1

Gene Description RNA binding motif protein 8A

Omim ID [605313](#)

Gene Ontology [Hyperlink](#)

Gene Summary This gene encodes a protein with a conserved RNA-binding motif. The protein is found predominantly in the nucleus, although it is also present in the cytoplasm. It is preferentially associated with mRNAs produced by splicing, including both nuclear mRNAs and newly exported cytoplasmic mRNAs. It is thought that the protein remains associated with spliced mRNAs as a tag to indicate where introns had been present, thus coupling pre- and post-mRNA splicing events. Previously, it was thought that two genes encode this protein, RBM8A and RBM8B; it is now thought that the RBM8B locus is a pseudogene. Two alternative start codons result in two forms of the protein, and this gene also uses multiple polyadenylation sites. [provided by RefSeq]

Other Designations OTTHUMP00000015573|RNA binding motif protein 8B|binder of OVCA1-1|ribonucleoprotein RBM8