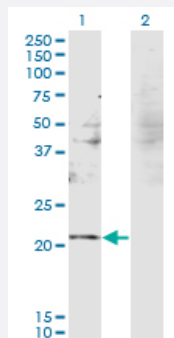


RBM8A monoclonal antibody (M08), clone 3E4

Catalog # H00009939-M08

Size 100 ug

Applications

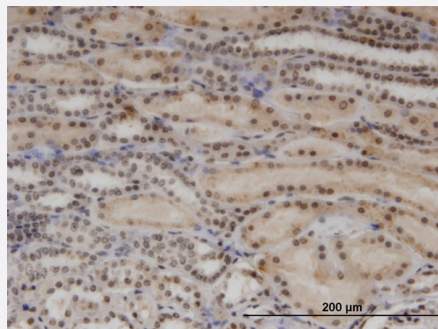


Western Blot (Transfected lysate)

Western Blot analysis of RBM8A expression in transfected 293T cell line by RBM8A monoclonal antibody (M08), clone 3E4.

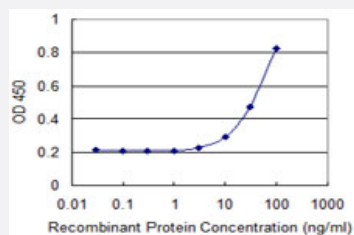
Lane 1: RBM8A transfected lysate (Predicted MW: 19.9 kDa).

Lane 2: Non-transfected lysate.



Immunohistochemistry (Formalin/PFA-fixed paraffin-embedded sections)

Immunoperoxidase of monoclonal antibody to RBM8A on formalin-fixed paraffin-embedded human kidney. [antibody concentration 3 ug/ml]



Sandwich ELISA (Recombinant protein)

Detection limit for recombinant GST tagged RBM8A is 3 ng/ml as a capture antibody.



Western Blot detection against Immunogen (44.88 KDa) .

Specification

Product Description	Mouse monoclonal antibody raised against a full-length recombinant RBM8A.
Immunogen	RBM8A (AAH17088, 1 a.a. ~ 174 a.a) full-length recombinant protein with GST tag. MW of the GST tag alone is 26 KDa.
Sequence	MADVLDLHEAGGEDFAMDEDGDESIHKLKEKAKKRKGRGFGSEEGSRARMREDYDSVEQDGD EPGPQRSVEGWILSVTGVHEEATEEDIHDKFAEYGEIKNIHLNLDRTGYLKGYTLVEYETYKEAQA AMEGLNGQDLMGQPIVDWCFVRGPPKGRRGRRRSRSPDRRRR
Host	Mouse
Reactivity	Human
Isotype	IgG2b Kappa
Quality Control Testing	Antibody Reactive Against Recombinant Protein. Western Blot detection against Immunogen (44.88 KDa) .
Storage Buffer	In 1x PBS, pH 7.4
Storage Instruction	Store at -20°C or lower. Aliquot to avoid repeated freezing and thawing.

Applications

● Western Blot (Transfected lysate)

Western Blot analysis of RBM8A expression in transfected 293T cell line by RBM8A monoclonal antibody (M08), clone 3E4.

Lane 1: RBM8A transfected lysate (Predicted MW: 19.9 KDa).

Lane 2: Non-transfected lysate.

[Protocol Download](#)

- Western Blot (Recombinant protein)

[Protocol Download](#)

- Immunohistochemistry (Formalin/PFA-fixed paraffin-embedded sections)

Immunoperoxidase of monoclonal antibody to RBM8A on formalin-fixed paraffin-embedded human kidney. [antibody concentration 3 ug/ml]

[Protocol Download](#)

- Sandwich ELISA (Recombinant protein)

Detection limit for recombinant GST tagged RBM8A is 3 ng/ml as a capture antibody.

[Protocol Download](#)

- ELISA

Gene Info — RBM8A

Entrez GeneID [9939](#)

GeneBank Accession# [BC017088](#)

Protein Accession# [AAH17088](#)

Gene Name RBM8A

Gene Alias BOV-1A, BOV-1B, BOV-1C, MDS014, RBM8, RBM8B, Y14, ZNRP, ZRNP1

Gene Description RNA binding motif protein 8A

Omim ID [605313](#)

Gene Ontology [Hyperlink](#)

Gene Summary This gene encodes a protein with a conserved RNA-binding motif. The protein is found predominantly in the nucleus, although it is also present in the cytoplasm. It is preferentially associated with mRNAs produced by splicing, including both nuclear mRNAs and newly exported cytoplasmic mRNAs. It is thought that the protein remains associated with spliced mRNAs as a tag to indicate where introns had been present, thus coupling pre- and post-mRNA splicing events. Previously, it was thought that two genes encode this protein, RBM8A and RBM8B; it is now thought that the RBM8B locus is a pseudogene. Two alternative start codons result in two forms of the protein, and this gene also uses multiple polyadenylation sites. [provided by RefSeq]

Other Designations OTTHUMP00000015573|RNA binding motif protein 8B|binder of OVCA1-1|ribonucleoprotein RBM8