

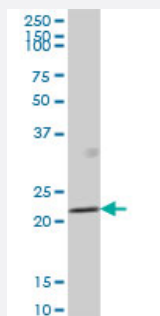
MaxPab®

## RBM8A MaxPab mouse polyclonal antibody (B01P)

Catalog # H00009939-B01P

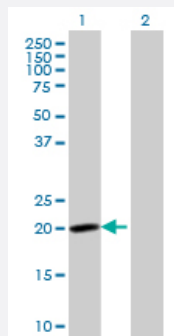
Size 50 ug

### Applications



#### Western Blot (Tissue lysate)

RBM8A MaxPab polyclonal antibody. Western Blot analysis of RBM8A expression in human placenta.



#### Western Blot (Transfected lysate)

Western Blot analysis of RBM8A expression in transfected 293T cell line ([H00009939-T01](#)) by RBM8A MaxPab polyclonal antibody.

Lane 1: RBM8A transfected lysate(19.14 KDa).

Lane 2: Non-transfected lysate.

### Specification

Product Description	Mouse polyclonal antibody raised against a full-length human RBM8A protein.
Immunogen	RBM8A (NP_005096, 1 a.a. ~ 174 a.a) full-length human protein.
Sequence	MADVLDLHEAGGEDFAMDEDGDESIHKLKEKAKKRKGRGFGSEEGSRARMREDYDSVEQDGD EPGPQRSVEGWILFVTGVHEEATEEDIHDKFAEYGEIKNIHLNLDRTGYLKGTYLVEYETYKEAQA AMEGLNGQDLMGQPISVDWCFVRGPPKGKRRGGRRRSRSPDRRRR
Host	Mouse
Reactivity	Human

Quality Control Testing	Antibody reactive against mammalian transfected lysate.
Storage Buffer	In 1x PBS, pH 7.4
Storage Instruction	Store at -20°C or lower. Aliquot to avoid repeated freezing and thawing.

## Applications

- Western Blot (Tissue lysate)

RBM8A MaxPab polyclonal antibody. Western Blot analysis of RBM8A expression in human placenta.

[Protocol Download](#)

- Western Blot (Transfected lysate)

Western Blot analysis of RBM8A expression in transfected 293T cell line ([H00009939-T01](#)) by RBM8A MaxPab polyclonal antibody.

Lane 1: RBM8A transfected lysate(19.14 KDa).

Lane 2: Non-transfected lysate.

[Protocol Download](#)

## Gene Info — RBM8A

Entrez GeneID	<a href="#">9939</a>
GeneBank Accession#	<a href="#">NM_005105</a>
Protein Accession#	<a href="#">NP_005096</a>
Gene Name	RBM8A
Gene Alias	BOV-1A, BOV-1B, BOV-1C, MDS014, RBM8, RBM8B, Y14, ZNRP, ZRNP1
Gene Description	RNA binding motif protein 8A
Omim ID	<a href="#">605313</a>
Gene Ontology	<a href="#">Hyperlink</a>

**Gene Summary**

This gene encodes a protein with a conserved RNA-binding motif. The protein is found predominantly in the nucleus, although it is also present in the cytoplasm. It is preferentially associated with mRNAs produced by splicing, including both nuclear mRNAs and newly exported cytoplasmic mRNAs. It is thought that the protein remains associated with spliced mRNAs as a tag to indicate where introns had been present, thus coupling pre- and post-mRNA splicing events. Previously, it was thought that two genes encode this protein, RBM8A and RBM8B; it is now thought that the RBM8B locus is a pseudogene. Two alternative start codons result in two forms of the protein, and this gene also uses multiple polyadenylation sites. [provided by RefSeq]

**Other Designations**

OTTHUMP00000015573|RNA binding motif protein 8B|binder of OVCA1-1|ribonucleoprotein RBM8