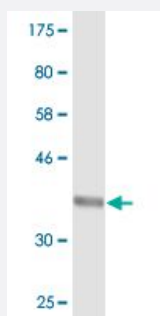


SEC24D monoclonal antibody (M03), clone 2D4

Catalog # H00009871-M03

Size 100 ug

Applications



Western Blot detection against Immunogen (36.41 KDa) .

Specification

Product Description	Mouse monoclonal antibody raised against a partial recombinant SEC24D.
Immunogen	SEC24D (NP_055637, 935 a.a. ~ 1032 a.a) partial recombinant protein with GST tag. MW of the GST tag alone is 26 KDa.
Sequence	SPPELIQGIFNVPSFAHINTDMLLPEVGNPYSQQLRMIMGIIQQKRPYSMKLTVKQREQPEMVFRQFLVEDKGLYGGSSYVDFLCCVHKEICQLLN
Host	Mouse
Reactivity	Human
Interspecies Antigen Sequence	Mouse (88)
Isotype	IgG1 Kappa
Quality Control Testing	Antibody Reactive Against Recombinant Protein. Western Blot detection against Immunogen (36.41 KDa) .
Storage Buffer	In 1x PBS, pH 7.4
Storage Instruction	Store at -20°C or lower. Aliquot to avoid repeated freezing and thawing.

Applications

- Western Blot (Recombinant protein)

[Protocol Download](#)

- ELISA

Gene Info — SEC24D

Entrez GeneID	9871
GeneBank Accession#	NM_014822
Protein Accession#	NP_055637
Gene Name	SEC24D
Gene Alias	FLJ43974, KIAA0755
Gene Description	SEC24 family, member D (S. cerevisiae)
Omim ID	607186
Gene Ontology	Hyperlink
Gene Summary	The protein encoded by this gene is a member of the SEC24 subfamily of the SEC23/SEC24 family, which is involved in vesicle trafficking. The encoded protein has similarity to yeast Sec24p component of COPII. COPII is the coat protein complex responsible for vesicle budding from the ER. This gene product is implicated in the shaping of the vesicle, and also in cargo selection and concentration. [provided by RefSeq]
Other Designations	SEC24 related gene family, member D Sec24-related protein D protein transport protein Sec24D

Disease

- [Alcoholism](#)
- [Genetic Predisposition to Disease](#)
- [Tobacco Use Disorder](#)