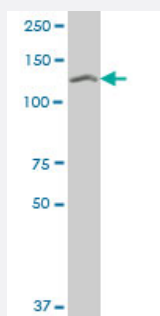


# SETDB1 monoclonal antibody (M07), clone 4A3

Catalog # H00009869-M07

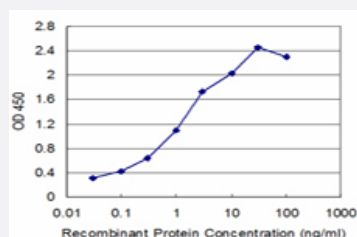
Size 100 ug

## Applications



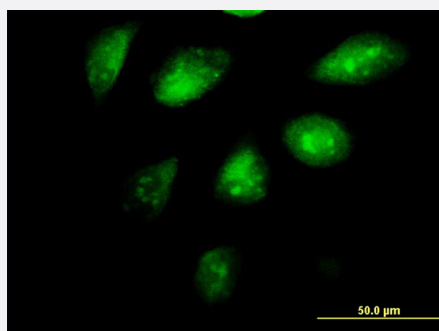
### Western Blot (Cell lysate)

SETDB1 monoclonal antibody (M07), clone 4A3 Western Blot analysis of SETDB1 expression in SW-13 ( Cat # L005V1 ).



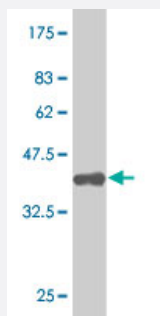
### Sandwich ELISA (Recombinant protein)

Detection limit for recombinant GST tagged SETDB1 is approximately 0.1ng/ml as a capture antibody.



### Immunofluorescence

Immunofluorescence of monoclonal antibody to SETDB1 on HeLa cell.  
[antibody concentration 10 ug/ml]



Western Blot detection against Immunogen (36.63 KDa) .

## Specification

<b>Product Description</b>	Mouse monoclonal antibody raised against a partial recombinant SETDB1.
<b>Immunogen</b>	SETDB1 (NP_036564, 2 a.a. ~ 100 a.a) partial recombinant protein with GST tag. MW of the GST tag alone is 26 KDa.
<b>Sequence</b>	SSLPGCIGLDAATATVESEEIAELQQAVVEELGISMEELRHFIDEELEKMDCVQQRKKQLAELETWVIQKESEVAHVVDQLFDDASRAVTNCESLVKDFY
<b>Host</b>	Mouse
<b>Reactivity</b>	Human
<b>Interspecies Antigen Sequence</b>	Mouse (90); Rat (90)
<b>Isotype</b>	IgG2a Kappa
<b>Quality Control Testing</b>	Antibody Reactive Against Recombinant Protein. Western Blot detection against Immunogen (36.63 KDa) .
<b>Storage Buffer</b>	In 1x PBS, pH 7.4
<b>Storage Instruction</b>	Store at -20°C or lower. Aliquot to avoid repeated freezing and thawing.

## Applications

- Western Blot (Cell lysate)

SETDB1 monoclonal antibody (M07), clone 4A3 Western Blot analysis of SETDB1 expression in SW-13 ( Cat # L005V1 ).

[Protocol Download](#)

- Western Blot (Recombinant protein)

[Protocol Download](#)

- Sandwich ELISA (Recombinant protein)

Detection limit for recombinant GST tagged SETDB1 is approximately 0.1ng/ml as a capture antibody.

[Protocol Download](#)

- ELISA

- Immunofluorescence

Immunofluorescence of monoclonal antibody to SETDB1 on HeLa cell. [antibody concentration 10 ug/ml]

## Gene Info — SETDB1

Entrez GeneID [9869](#)

GeneBank Accession# [NM\\_012432](#)

Protein Accession# [NP\\_036564](#)

Gene Name SETDB1

Gene Alias ESET, KG1T, KIAA0067, KMT1E

Gene Description SET domain, bifurcated 1

Omim ID [604396](#)

Gene Ontology [Hyperlink](#)

**Gene Summary** This gene encodes a histone methyltransferase. The encoded enzyme catalyzes the reaction of S-adenosyl-L-methionine and histone L-lysine to produce S-adenosyl-L-homocysteine and histone N(6)-methyl-L-lysine. The encoded protein likely functions in transcriptional repression. Alternatively spliced transcript variants have been described

**Other Designations** ERG-associated protein with a SET domain, ESET

## Pathway

- [Lysine degradation](#)

## Disease

- [Breast cancer](#)
- [Breast Neoplasms](#)
- [Genetic Predisposition to Disease](#)