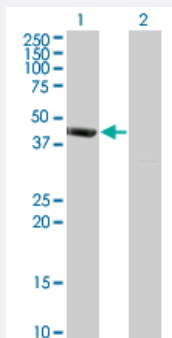


PSMD6 monoclonal antibody (M01), clone 1C1

Catalog # H00009861-M01

Size 100 ug

Applications

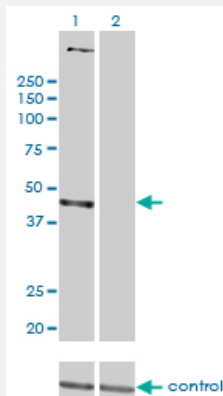


Western Blot (Transfected lysate)

Western Blot analysis of PSMD6 expression in transfected 293T cell line by PSMD6 monoclonal antibody (M01), clone 1C1.

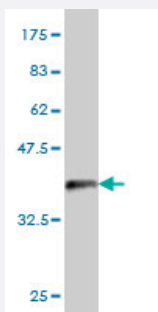
Lane 1: PSMD6 transfected lysate(45.5 KDa).

Lane 2: Non-transfected lysate.



RNAi Knockdown (Antibody validated)

Western blot analysis of PSMD6 over-expressed 293 cell line, cotransfected with PSMD6 Validated Chimera RNAi (Cat # H00009861-R01V) (Lane 2) or non-transfected control (Lane 1). Blot probed with PSMD6 monoclonal antibody (M01), clone 1C1 (Cat # H00009861-M01). GAPDH (36.1 kDa) used as specificity and loading control.



Western Blot detection against Immunogen (36.52 KDa) .

Specification

Product Description

Mouse monoclonal antibody raised against a partial recombinant PSMD6.

Immunogen	PSMD6 (NP_055629, 292 a.a. ~ 389 a.a) partial recombinant protein with GST tag. MW of the GST tag alone is 26 KDa.
Sequence	YRYVREMRIHAYSQLLSYRSLTLGYMAEAFGVGVFEFIDQELSRFIAAGRLHCKIDKVNEIVETNRP DSKNWQYQETIKKGDLLLNRVQKLSRVINM
Host	Mouse
Reactivity	Human
Interspecies Antigen Sequence	Mouse (97)
Isotype	IgG1 Kappa
Quality Control Testing	Antibody Reactive Against Recombinant Protein. Western Blot detection against Immunogen (36.52 KDa) .
Storage Buffer	In 1x PBS, pH 7.4
Storage Instruction	Store at -20°C or lower. Aliquot to avoid repeated freezing and thawing.

Applications

- Western Blot (Transfected lysate)

Western Blot analysis of PSMD6 expression in transfected 293T cell line by PSMD6 monoclonal antibody (M01), clone 1C1.

Lane 1: PSMD6 transfected lysate(45.5 KDa).

Lane 2: Non-transfected lysate.

[Protocol Download](#)

- Western Blot (Recombinant protein)

[Protocol Download](#)

- ELISA

- RNAi Knockdown (Antibody validated)

Western blot analysis of PSMD6 over-expressed 293 cell line, cotransfected with PSMD6 Validated Chimera RNAi (Cat # H00009861-R01V) (Lane 2) or non-transfected control (Lane 1). Blot probed with PSMD6 monoclonal antibody (M01), clone 1C1 (Cat # H00009861-M01). GAPDH (36.1 kDa) used as specificity and loading control.

[Protocol Download](#)

Gene Info — PSMD6

Entrez GeneID [9861](#)**GeneBank Accession#** [NM_014814](#)**Protein Accession#** [NP_055629](#)**Gene Name** PSMD6**Gene Alias** KIAA0107, Rpn7, S10, SGA-113M, p44S10**Gene Description** proteasome (prosome, macropain) 26S subunit, non-ATPase, 6**Gene Ontology** [Hyperlink](#)**Gene Summary** proteasome (prosome**Other Designations** proteasome regulatory particle subunit p44S10

Pathway

- [Proteasome](#)