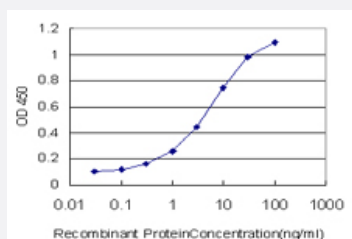


HEPH monoclonal antibody (M01), clone 2D3

Catalog # H00009843-M01

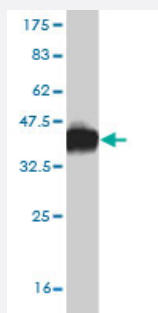
Size 100 ug

Applications



Sandwich ELISA (Recombinant protein)

Detection limit for recombinant GST tagged HEPH is approximately 0.3ng/ml as a capture antibody.



Western Blot detection against Immunogen (37.84 KDa) .

Specification

Product Description

Mouse monoclonal antibody raised against a partial recombinant HEPH.

Immunogen

HEPH (NP_620074, 315 a.a. ~ 424 a.a) partial recombinant protein with GST tag. MW of the GST tag alone is 26 KDa.

Sequence

TRGHHTDVANIFPATFVTAEMVPWEPGTWLISCQVNSHFRDGMQALYKVKSCSMAPPVDLLTGK
VRQYFIEAHEIQWDYGPMSGHDGSTGKNLREPGSISDKFFQKSSRI

Host

Mouse

Reactivity

Human

Interspecies Antigen Sequence	Mouse (83); Rat (80)
Isotype	IgG2a Kappa
Quality Control Testing	Antibody Reactive Against Recombinant Protein. Western Blot detection against Immunogen (37.84 KDa) .
Storage Buffer	In 1x PBS, pH 7.4
Storage Instruction	Store at -20°C or lower. Aliquot to avoid repeated freezing and thawing.

Applications

- Western Blot (Recombinant protein)

[Protocol Download](#)

- Sandwich ELISA (Recombinant protein)

Detection limit for recombinant GST tagged HEPH is approximately 0.3ng/ml as a capture antibody.

[Protocol Download](#)

- ELISA

Gene Info — HEPH

Entrez GeneID	9843
GeneBank Accession#	NM_138737
Protein Accession#	NP_620074
Gene Name	HEPH
Gene Alias	CPL, KIAA0698
Gene Description	hephaestin
Omim ID	300167
Gene Ontology	Hyperlink

Gene Summary

The protein encoded by this gene is similar to an iron transport protein found in mouse. The mouse protein is similar to ceruloplasmin, a serum multi-copper ferroxidase, and is thought to be a membrane-bound protein responsible for transport of dietary iron from epithelial cells of the intestinal lumen into the circulatory system. In mouse, defects in this gene can lead to severe microcytic anemia. Three transcript variants encoding different isoforms have been described for this gene. [provided by RefSeq]

Other Designations

OTTHUMP00000023443|OTTHUMP00000023444|OTTHUMP00000023445

Disease

- [Abortion](#)
- [Genetic Predisposition to Disease](#)