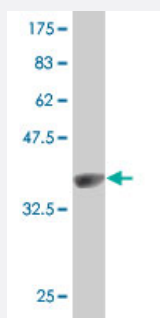


HEPH polyclonal antibody (A01)

Catalog # H00009843-A01

Size 50 uL

Applications



Western Blot detection against Immunogen (38.21 KDa) .

Specification

Product Description	Mouse polyclonal antibody raised against a partial recombinant HEPH.
Immunogen	HEPH (NP_620074, 315 a.a. ~ 424 a.a) partial recombinant protein with GST tag.
Sequence	TRGHHTDVANIFPATFVTAEMVPWEPGTWLISCQVNSHFRDGMQALYKVKSCSMAPPVDLLTGK VRQYFIEAHEIQWDYGPMGHDGSTGKNLREPGSISDKFFQKSSSRI
Host	Mouse
Reactivity	Human
Interspecies Antigen Sequence	Mouse (83); Rat (80)
Quality Control Testing	Antibody Reactive Against Recombinant Protein. Western Blot detection against Immunogen (38.21 KDa) .
Storage Buffer	50 % glycerol
Storage Instruction	Store at -20°C or lower. Aliquot to avoid repeated freezing and thawing.

Applications

- Western Blot (Recombinant protein)

[Protocol Download](#)

- ELISA

Gene Info — HEPH

Entrez GeneID [9843](#)

GeneBank Accession# [NM_138737](#)

Protein Accession# [NP_620074](#)

Gene Name HEPH

Gene Alias CPL, KIAA0698

Gene Description hephaestin

Omim ID [300167](#)

Gene Ontology [Hyperlink](#)

Gene Summary The protein encoded by this gene is similar to an iron transport protein found in mouse. The mouse protein is similar to ceruloplasmin, a serum multi-copper ferroxidase, and is thought to be a membrane-bound protein responsible for transport of dietary iron from epithelial cells of the intestinal lumen into the circulatory system. In mouse, defects in this gene can lead to severe microcytic anemia. Three transcript variants encoding different isoforms have been described for this gene. [provided by RefSeq]

Other Designations OTTHUMP00000023443|OTTHUMP00000023444|OTTHUMP00000023445

Disease

- [Abortion](#)
- [Genetic Predisposition to Disease](#)