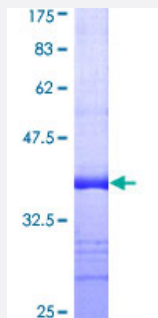


# PLEKHM1 (Human) Recombinant Protein (Q01)

Catalog # H00009842-Q01

Size 25 ug, 10 ug

## Applications



## Specification

<b>Product Description</b>	Human PLEKHM1 partial ORF ( AAH64361, 957 a.a. - 1056 a.a.) recombinant protein with GST-tag at N-terminal.
<b>Sequence</b>	PHRFSVADLQQIADGVYEGFLKALIEFASQHVYHCDLCTQRGFICQICQHHDIIFFPEFDTTVRCAE CKTVFHQSCQAVVKKGCPRCARRRKYQEQNIFA
<b>Host</b>	Wheat Germ (in vitro)
<b>Theoretical MW (kDa)</b>	36.74
<b>Interspecies Antigen Sequence</b>	Mouse (93); Rat (93)
<b>Preparation Method</b>	<a href="#">in vitro wheat germ expression system</a>
<b>Purification</b>	Glutathione Sepharose 4 Fast Flow
<b>Quality Control Testing</b>	12.5% SDS-PAGE Stained with Coomassie Blue.
<b>Storage Buffer</b>	50 mM Tris-HCl, 10 mM reduced Glutathione, pH=8.0 in the elution buffer.
<b>Storage Instruction</b>	Store at -80°C. Aliquot to avoid repeated freezing and thawing.
<b>Note</b>	Best use within three months from the date of receipt of this protein.

## Applications

- Enzyme-linked Immunoabsorbent Assay
- Western Blot (Recombinant protein)
- Antibody Production
- Protein Array

## Gene Info — PLEKHM1

Entrez GeneID	<a href="#">9842</a>
GeneBank Accession#	<a href="#">BC064361</a>
Protein Accession#	<a href="#">AAH64361</a>
Gene Name	PLEKHM1
Gene Alias	AP162, B2, KIAA0356, OPTB6
Gene Description	pleckstrin homology domain containing, family M (with RUN domain) member 1
Omim ID	<a href="#">611466</a> <a href="#">611497</a>
Gene Ontology	<a href="#">Hyperlink</a>
Gene Summary	The protein encoded by this gene is essential for bone resorption, and may play a critical role in vesicular transport in the osteoclast. Mutations in this gene are associated with autosomal recessive osteopetrosis type 6 (OPTB6). Alternatively spliced transcript variants have been found for this gene. [provided by RefSeq]
Other Designations	adapter protein 162