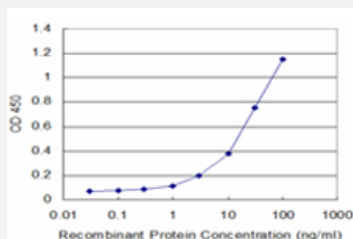


PLEKHM1 monoclonal antibody (M01), clone 1C9

Catalog # H00009842-M01

Size 100 ug

Applications



Sandwich ELISA (Recombinant protein)

Detection limit for recombinant GST tagged PLEKHM1 is approximately 1ng/ml as a capture antibody.

Specification

Product Description	Mouse monoclonal antibody raised against a partial recombinant PLEKHM1.
Immunogen	PLEKHM1 (AAH64361, 957 a.a. ~ 1056 a.a) partial recombinant protein with GST tag. MW of the GST tag alone is 26 KDa.
Sequence	PHRFSVADLQQIADGVYEGFLKALIEFASQHVYHCDLCTQRGFICQICQHHDIIFFPEFDTTVRCAE CKTVFHHQSCQAVVKKGCPRCARRRKYQEQNIFA
Host	Mouse
Reactivity	Human
Interspecies Antigen Sequence	Mouse (93); Rat (93)
Isotype	IgG2b Kappa
Quality Control Testing	Antibody Reactive Against Recombinant Protein.
Storage Buffer	In 1x PBS, pH 7.4
Storage Instruction	Store at -20°C or lower. Aliquot to avoid repeated freezing and thawing.

Applications

- Sandwich ELISA (Recombinant protein)

Detection limit for recombinant GST tagged PLEKHM1 is approximately 1ng/ml as a capture antibody.

[Protocol Download](#)

- ELISA

Gene Info — PLEKHM1

Entrez GeneID	9842
GeneBank Accession#	BC064361
Protein Accession#	AAH64361
Gene Name	PLEKHM1
Gene Alias	AP162, B2, KIAA0356, OPTB6
Gene Description	pleckstrin homology domain containing, family M (with RUN domain) member 1
Omim ID	611466 611497
Gene Ontology	Hyperlink
Gene Summary	The protein encoded by this gene is essential for bone resorption, and may play a critical role in vesicular transport in the osteoclast. Mutations in this gene are associated with autosomal recessive osteopetrosis type 6 (OPTB6). Alternatively spliced transcript variants have been found for this gene. [provided by RefSeq]
Other Designations	adapter protein 162