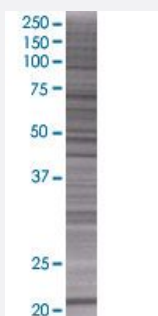


GINS1 293T Cell Transient Overexpression Lysate(Denatured)

Catalog # H00009837-T02

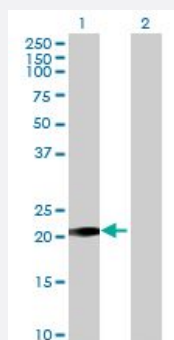
Size 100 uL

Applications



SDS-PAGE Gel

GINS1 transfected lysate.



Western Blot

Lane 1: GINS1 transfected lysate (21.67 KDa)

Lane 2: Non-transfected lysate.

Specification

Transfected Cell Line	293T
Plasmid	pCMV-GINS1 full-length
Host	Human
Theoretical MW (kDa)	21.67
Interspecies Antigen Sequence	Mouse (92); Rat (93)

Quality Control Testing

Transient overexpression cell lysate was tested with Anti-GINS1 antibody ([H00009837-B02](#)) by Western Blots.
SDS-PAGE Gel
GINS1 transfected lysate.
Western Blot
Lane 1: GINS1 transfected lysate (21.67 KDa)
Lane 2: Non-transfected lysate.

Storage Buffer

1X Sample Buffer (50 mM Tris-HCl, 2% SDS, 10% glycerol, 300 mM 2-mercaptoethanol, 0.01% Bromophenol blue)

Storage Instruction

Store at -80°C. Aliquot to avoid repeated freezing and thawing.

Applications

- Western Blot

Gene Info — GINS1

Entrez GeneID[9837](#)**GeneBank Accession#**[BC012542](#)**Protein Accession#**[AAH12542](#)**Gene Name**

GINS1

Gene Alias

KIAA0186, PSF1

Gene Description

GINS complex subunit 1 (Psf1 homolog)

Omim ID[610608](#)**Gene Ontology**[Hyperlink](#)**Gene Summary**

The yeast heterotetrameric GINS complex is made up of Sld5 (GINS4; MIM 610611), Psf1, Psf2 (GINS2; MIM 610609), and Psf3 (GINS3; MIM 610610). The formation of the GINS complex is essential for the initiation of DNA replication in yeast and Xenopus egg extracts (Ueno et al., 2005 [PubMed 16287864]).[supplied by OMIM]

Other Designations

DNA replication complex GINS protein PSF1|OTTHUMP00000030496|partner of sld five-1