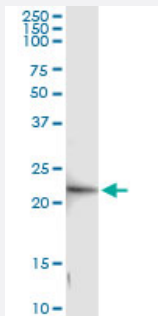


# GINS1 (Human) IP-WB Antibody Pair

Catalog # H00009837-PW1

Size 1 Set

## Applications



Immunoprecipitation of GINS1 transfected lysate using rabbit polyclonal anti-GINS1 and Protein A Magnetic Bead ([U0007](#)), and immunoblotted with mouse purified polyclonal anti-GINS1.

## Specification

<b>Product Description</b>	This IP-WB antibody pair set comes with one antibody for immunoprecipitation and another to detect the precipitated protein in western blot.
<b>Reactivity</b>	Human
<b>Interspecies Antigen Sequence</b>	Mouse (92); Rat (93)
<b>Quality Control Testing</b>	Immunoprecipitation-Western Blot (IP-WB) Immunoprecipitation of GINS1 transfected lysate using rabbit polyclonal anti-GINS1 and Protein A Magnetic Bead ( <a href="#">U0007</a> ), and immunoblotted with mouse purified polyclonal anti-GINS1.
<b>Supplied Product</b>	Antibody pair set content: 1. Antibody pair for IP: rabbit polyclonal anti-GINS1 (300 ul) 2. Antibody pair for WB: mouse purified polyclonal anti-GINS1 (50 ug)
<b>Storage Instruction</b>	Store reagents of the antibody pair set at -20°C or lower. Please aliquot to avoid repeated freeze thaw cycle. Reagents should be returned to -20°C storage immediately after use.

## Applications

- Immunoprecipitation-Western Blot

[Protocol Download](#)

## Gene Info — GINS1

Entrez GeneID	<a href="#">9837</a>
---------------	----------------------

Gene Name	GINS1
-----------	-------

Gene Alias	KIAA0186, PSF1
------------	----------------

Gene Description	GINS complex subunit 1 (Psf1 homolog)
------------------	---------------------------------------

Omim ID	<a href="#">610608</a>
---------	------------------------

Gene Ontology	<a href="#">Hyperlink</a>
---------------	---------------------------

Gene Summary	The yeast heterotetrameric GINS complex is made up of Sld5 (GINS4; MIM 610611), Psf1, Psf2 (GINS2; MIM 610609), and Psf3 (GINS3; MIM 610610). The formation of the GINS complex is essential for the initiation of DNA replication in yeast and Xenopus egg extracts (Ueno et al., 2005 [PubMed 16287864]).[supplied by OMIM]
--------------	---

Other Designations	DNA replication complex GINS protein PSF1 OTTHUMP00000030496 partner of sld five-1
--------------------	--