

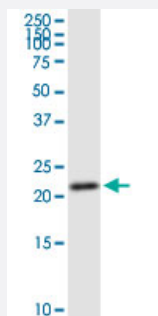
MaxPab®

GINS1 purified MaxPab rabbit polyclonal antibody (D02P)

Catalog # H00009837-D02P

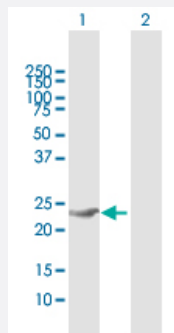
Size 100 ug

Applications



Western Blot (Cell lysate)

GINS1 MaxPab rabbit polyclonal antibody. Western Blot analysis of GINS1 expression in Jurkat.



Western Blot (Transfected lysate)

Western Blot analysis of GINS1 expression in transfected 293T cell line ([H00009837-T01](#)) by GINS1 MaxPab polyclonal antibody.

Lane 1: GINS1 transfected lysate(21.67 KDa).

Lane 2: Non-transfected lysate.

Specification

Product Description	Rabbit polyclonal antibody raised against a full-length human GINS1 protein.
Immunogen	GINS1 (AAH12542.1, 1 a.a. ~ 196 a.a) full-length human protein.
Sequence	MFCEKAMELIRELHRAPEGQLPAFNEDGLRQVLEEMKALYEQNSQSDVNEAKSGGRSDLIPTIKFR HCSLLRNRRCTVAYLYDRLLRIRALRWEYGSILPNALRFHMAAEEMEFNNYKRSLATYMRS LGG DEGLDITQDMKPPKSLYIEVRCLKDYGEFEVDDGTSVLLKKNSQHF LPRWKCEQLRQGVLEHILS
Host	Rabbit
Reactivity	Human

Interspecies Antigen Sequence	Mouse (92); Rat (93)
Quality Control Testing	Antibody reactive against mammalian transfected lysate.
Storage Buffer	In 1x PBS, pH 7.4
Storage Instruction	Store at -20°C or lower. Aliquot to avoid repeated freezing and thawing.

Applications

- Western Blot (Cell lysate)

GINS1 MaxPab rabbit polyclonal antibody. Western Blot analysis of GINS1 expression in Jurkat.

[Protocol Download](#)

- Western Blot (Transfected lysate)

Western Blot analysis of GINS1 expression in transfected 293T cell line ([H00009837-T01](#)) by GINS1 MaxPab polyclonal antibody.

Lane 1: GINS1 transfected lysate(21.67 KDa).

Lane 2: Non-transfected lysate.

[Protocol Download](#)

Gene Info — GINS1

Entrez GeneID	9837
GeneBank Accession#	BC012542.1
Protein Accession#	AAH12542.1
Gene Name	GINS1
Gene Alias	KIAA0186, PSF1
Gene Description	GINS complex subunit 1 (Psf1 homolog)
Omim ID	610608
Gene Ontology	Hyperlink

Gene Summary

The yeast heterotetrameric GINS complex is made up of Sld5 (GINS4; MIM 610611), Psf1, Psf2 (GINS2; MIM 610609), and Psf3 (GINS3; MIM 610610). The formation of the GINS complex is essential for the initiation of DNA replication in yeast and Xenopus egg extracts (Ueno et al., 2005 [PubMed 16287864]).[supplied by OMIM]

Other Designations

DNA replication complex GINS protein PSF1|OTTHUMP00000030496|partner of sld five-1