

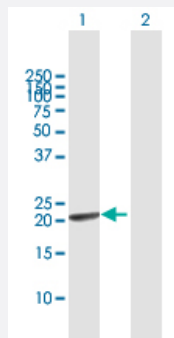
MaxPab®

GINS1 purified MaxPab mouse polyclonal antibody (B01P)

Catalog # H00009837-B01P

Size 50 ug

Applications



Western Blot (Transfected lysate)

Western Blot analysis of GINS1 expression in transfected 293T cell line ([H00009837-T01](#)) by GINS1 MaxPab polyclonal antibody.

Lane 1: GINS1 transfected lysate(21.67 KDa).

Lane 2: Non-transfected lysate.

Specification

Product Description	Mouse polyclonal antibody raised against a full-length human GINS1 protein.
Immunogen	GINS1 (AAH12542, 1 a.a. ~ 196 a.a) full-length human protein.
Sequence	MFCEKAMELIRELHRAPEGQLPAFNEDGLRQVLEEMKALYEQNQSDVNEAKSGGRSDLIPTIKFR HCSLLRNRRCTVAYLYDRLLRIRALRWEYGSILPNALRFHMAAEEMEWFNNYKRSLATYMRS LGG DEGLDITQDMKPPKSLYIEVRCLKDYGEFEVDDGTSVLLKKNSQHF LPRWKCEQLRQGVLEHILS
Host	Mouse
Reactivity	Human
Interspecies Antigen Sequence	Mouse (92); Rat (93)
Quality Control Testing	Antibody reactive against mammalian transfected lysate.
Storage Buffer	In 1x PBS, pH 7.4
Storage Instruction	Store at -20°C or lower. Aliquot to avoid repeated freezing and thawing.

Applications

- Western Blot (Transfected lysate)

Western Blot analysis of GINS1 expression in transfected 293T cell line ([H00009837-T01](#)) by GINS1 MaxPab polyclonal antibody.

Lane 1: GINS1 transfected lysate(21.67 KDa).

Lane 2: Non-transfected lysate.

[Protocol Download](#)

Gene Info — GINS1

Entrez GeneID	9837
GeneBank Accession#	BC012542
Protein Accession#	AAH12542
Gene Name	GINS1
Gene Alias	KIAA0186, PSF1
Gene Description	GINS complex subunit 1 (Psf1 homolog)
Omim ID	610608
Gene Ontology	Hyperlink
Gene Summary	The yeast heterotetrameric GINS complex is made up of Sld5 (GINS4; MIM 610611), Psf1, Psf2 (GINS2; MIM 610609), and Psf3 (GINS3; MIM 610610). The formation of the GINS complex is essential for the initiation of DNA replication in yeast and Xenopus egg extracts (Ueno et al., 2005 [PubMed 16287864]).[supplied by OMIM]
Other Designations	DNA replication complex GINS protein PSF1 OTTHUMP00000030496 partner of sld five-1