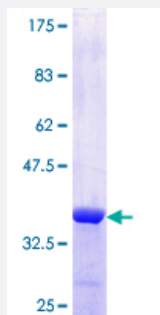


NUPL1 (Human) Recombinant Protein (Q01)

Catalog # H00009818-Q01

Size 25 ug, 10 ug

Applications



Specification

Product Description	Human NUPL1 partial ORF (NP_054808.1, 323 a.a. - 422 a.a.) recombinant protein with GST-tag at N-terminal.
Sequence	EIALRTQKTPPGGLQHEYAAPADYFRILVQQFEVQLQQYRQQIEELENHLATQANNSHITPQDLSMA MQKIYQTFVALAAQLQSIHENVKVLKEQYLGYRK
Host	Wheat Germ (in vitro)
Theoretical MW (kDa)	36.74
Preparation Method	in vitro wheat germ expression system
Purification	Glutathione Sepharose 4 Fast Flow
Quality Control Testing	12.5% SDS-PAGE Stained with Coomassie Blue.
Storage Buffer	50 mM Tris-HCl, 10 mM reduced Glutathione, pH=8.0 in the elution buffer.
Storage Instruction	Store at -80°C. Aliquot to avoid repeated freezing and thawing.
Note	Best use within three months from the date of receipt of this protein.

Applications

- Enzyme-linked Immunoabsorbent Assay
- Western Blot (Recombinant protein)
- Antibody Production
- Protein Array

Gene Info — NUPL1

Entrez GeneID	9818
GeneBank Accession#	NM_014089
Protein Accession#	NP_054808.1
Gene Name	NUPL1
Gene Alias	KIAA0410, PRO2463
Gene Description	nucleoporin like 1
Omim ID	607615
Gene Ontology	Hyperlink
Gene Summary	This gene encodes a member of the nucleoporin family that shares 87% sequence identity with rat nucleoporin p58. The protein is localized to the nuclear rim and is a component of the nuclear pore complex (NPC). All molecules entering or leaving the nucleus either diffuse through or are actively transported by the NPC. Alternate transcriptional splice variants, encoding different isoforms, have been characterized. [provided by RefSeq]
Other Designations	OTTHUMP00000018146 OTTHUMP00000042323 nucleoporin p58/p45