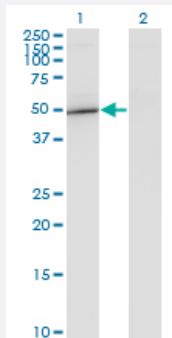


# GIT2 monoclonal antibody (M04), clone 1B2

Catalog # H00009815-M04

Size 100 ug

## Applications

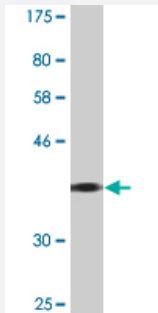


### Western Blot (Transfected lysate)

Western Blot analysis of GIT2 expression in transfected 293T cell line by GIT2 monoclonal antibody (M04), clone 1B2.

Lane 1: GIT2 transfected lysate (Predicted MW: 52.6 kDa).

Lane 2: Non-transfected lysate.



Western Blot detection against Immunogen (36.52 kDa) .

## Specification

<b>Product Description</b>	Mouse monoclonal antibody raised against a partial recombinant GIT2.
<b>Immunogen</b>	GIT2 (NP_055591, 401 a.a. ~ 498 a.a) partial recombinant protein with GST tag. MW of the GST tag alone is 26 kDa.
<b>Sequence</b>	TDLETTASKTNRQKLQTLQSENSNLRKQATTNVYQVQTGSEYTDTSNHSSLKRRPSARGSRPMS MYETGSGQKPYLPMGEASRPEESRMRLQPFFAHA
<b>Host</b>	Mouse
<b>Reactivity</b>	Human

Interspecies Antigen Sequence	Mouse (93); Rat (95)
Isotype	IgG1 Kappa
Quality Control Testing	Antibody Reactive Against Recombinant Protein. Western Blot detection against Immunogen (36.52 KDa) .
Storage Buffer	In 1x PBS, pH 7.4
Storage Instruction	Store at -20°C or lower. Aliquot to avoid repeated freezing and thawing.

## Applications

- Western Blot (Transfected lysate)

Western Blot analysis of GIT2 expression in transfected 293T cell line by GIT2 monoclonal antibody (M04), clone 1B2.

Lane 1: GIT2 transfected lysate (Predicted MW: 52.6 KDa).

Lane 2: Non-transfected lysate.

[Protocol Download](#)

- Western Blot (Recombinant protein)

[Protocol Download](#)

- ELISA

## Gene Info — GIT2

Entrez GeneID	<a href="#">9815</a>
GeneBank Accession#	<a href="#">NM_014776</a>
Protein Accession#	<a href="#">NP_055591</a>
Gene Name	GIT2
Gene Alias	CAT-2, DKFZp686G01261, KIAA0148, MGC760
Gene Description	G protein-coupled receptor kinase interacting ArfGAP 2
Omim ID	<a href="#">608564</a>
Gene Ontology	<a href="#">Hyperlink</a>

**Gene Summary**

This gene encodes a member of the GIT protein family, which interact with G protein-coupled receptor kinases and possess ADP-ribosylation factor (ARF) GTPase-activating protein (GAP) activity. GIT proteins traffic between cytoplasmic complexes, focal adhesions, and the cell periphery, and interact with Pak interacting exchange factor beta (PIX) to form large oligomeric complexes that transiently recruit other proteins. GIT proteins regulate cytoskeletal dynamics and participate in receptor internalization and membrane trafficking. This gene has been shown to repress lamellipodial extension and focal adhesion turnover, and is thought to regulate cell motility. This gene undergoes extensive alternative splicing to generate multiple isoforms, but the full-length nature of some of these variants has not been determined. The various isoforms have functional differences, with respect to ARF GAP activity and to G protein-coupled receptor kinase 2 binding. [provided by RefSeq]

**Other Designations**

ARF GTPase-activating protein GIT2|G protein-coupled receptor kinase interactor 2|GRK-interacting protein 2|cool-associated, tyrosine phosphorylated protein 2

**Pathway**

- [Endocytosis](#)