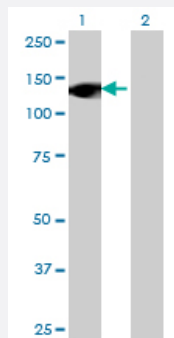


# RNF40 monoclonal antibody (M09), clone 1C1

Catalog # H00009810-M09

Size 100 ug

## Applications

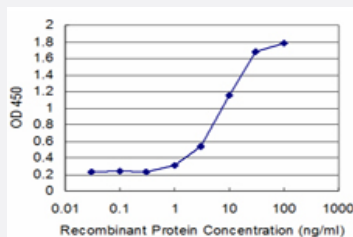


### Western Blot (Transfected lysate)

Western Blot analysis of RNF40 expression in transfected 293T cell line by RNF40 monoclonal antibody (M09), clone 1C1.

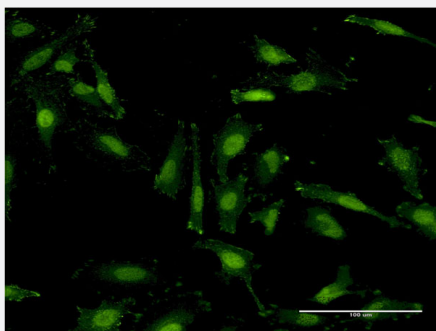
Lane 1: RNF40 transfected lysate (113.7 kDa).

Lane 2: Non-transfected lysate.



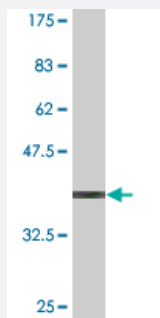
### Sandwich ELISA (Recombinant protein)

Detection limit for recombinant GST tagged RNF40 is approximately 1 ng/ml as a capture antibody.



### Immunofluorescence

Immunofluorescence of monoclonal antibody to RNF40 on HeLa cell. [antibody concentration 10 ug/ml]



Western Blot detection against Immunogen (36.63 KDa) .

## Specification

<b>Product Description</b>	Mouse monoclonal antibody raised against a partial recombinant RNF40.
<b>Immunogen</b>	RNF40 (NP_055586, 102 a.a. ~ 200 a.a) partial recombinant protein with GST tag. MW of the GST tag alone is 26 KDa.
<b>Sequence</b>	DETVEALLRCHESQGELSSAPEAPGTQEGPTCDGTPLEPGTSELRDPLLMQLRPPLSEPALAFVVALGASSSEEEVELELQGRMEFSKAAVSRVVEASD
<b>Host</b>	Mouse
<b>Reactivity</b>	Human
<b>Interspecies Antigen Sequence</b>	Mouse (92); Rat (92)
<b>Isotype</b>	IgG2a Kappa
<b>Quality Control Testing</b>	Antibody Reactive Against Recombinant Protein. Western Blot detection against Immunogen (36.63 KDa) .
<b>Storage Buffer</b>	In 1x PBS, pH 7.4
<b>Storage Instruction</b>	Store at -20°C or lower. Aliquot to avoid repeated freezing and thawing.

## Applications

### ● Western Blot (Transfected lysate)

Western Blot analysis of RNF40 expression in transfected 293T cell line by RNF40 monoclonal antibody (M09), clone 1C1.

Lane 1: RNF40 transfected lysate(113.7 KDa).

Lane 2: Non-transfected lysate.

[Protocol Download](#)

- Western Blot (Recombinant protein)

[Protocol Download](#)

- Sandwich ELISA (Recombinant protein)

Detection limit for recombinant GST tagged RNF40 is approximately 1ng/ml as a capture antibody.

[Protocol Download](#)

- ELISA

- Immunofluorescence

Immunofluorescence of monoclonal antibody to RNF40 on HeLa cell . [antibody concentration 10 ug/ml]

## Gene Info — RNF40

Entrez GeneID [9810](#)

GeneBank Accession# [NM\\_014771](#)

Protein Accession# [NP\\_055586](#)

Gene Name RNF40

Gene Alias BRE1B, DKFZp686K191, KIAA0661, MGC13051, RBP95, STARING

Gene Description ring finger protein 40

Omim ID [607700](#)

Gene Ontology [Hyperlink](#)

**Gene Summary** The protein encoded by this gene contains a RING finger, a motif known to be involved in protein-protein and protein-DNA interactions. This protein was reported to interact with the tumor suppressor protein RB1. Studies of the rat counterpart suggested that this protein may function as an E3 ubiquitin-protein ligase, and facilitate the ubiquitination and degradation of syntaxin 1, which is an essential component of the neurotransmitter release machinery. [provided by RefSeq]

**Other Designations** 95 kDa retinoblastoma protein binding protein|BRE1 E3 ubiquitin ligase homolog B|Rb-associated protein