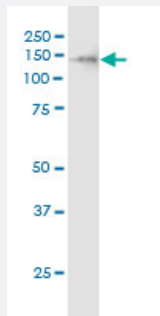


# ZFYVE16 (Human) IP-WB Antibody Pair

Catalog # H00009765-PW2

Size 1 Set

## Applications



Immunoprecipitation of ZFYVE16 transfected lysate using rabbit polyclonal anti-ZFYVE16 and Protein A Magnetic Bead ([U0007](#)), and immunoblotted with mouse purified polyclonal anti-ZFYVE16.

## Specification

<b>Product Description</b>	This IP-WB antibody pair set comes with one antibody for immunoprecipitation and another to detect the precipitated protein in western blot.
<b>Reactivity</b>	Human
<b>Quality Control Testing</b>	Immunoprecipitation-Western Blot (IP-WB) Immunoprecipitation of ZFYVE16 transfected lysate using rabbit polyclonal anti-ZFYVE16 and Protein A Magnetic Bead ( <a href="#">U0007</a> ), and immunoblotted with mouse purified polyclonal anti-ZFYVE16.
<b>Supplied Product</b>	Antibody pair set content: 1. Antibody pair for IP: rabbit polyclonal anti-ZFYVE16 (300 ul) 2. Antibody pair for WB: mouse purified polyclonal anti-ZFYVE16 (50 ug)
<b>Storage Instruction</b>	Store reagents of the antibody pair set at -20°C or lower. Please aliquot to avoid repeated freeze thaw cycle. Reagents should be returned to -20°C storage immediately after use.

## Applications

- Immunoprecipitation-Western Blot

[Protocol Download](#)

## Gene Info — ZFYVE16

Entrez GeneID	<a href="#">9765</a>
Gene Name	ZFYVE16
Gene Alias	DKFZp686E13162, ENDOFIN, KIAA0305
Gene Description	zinc finger, FYVE domain containing 16
Omim ID	<a href="#">608880</a>
Gene Ontology	<a href="#">Hyperlink</a>
Gene Summary	The ZFYVE16 gene encodes endofin, an endosomal protein implicated in regulating membrane trafficking. It is characterized by the presence of a phosphatidylinositol 3-phosphate-binding FYVE domain positioned in the middle of the molecule (Seet et al., 2004 [PubMed 14613930]).[supplied by OMIM]
Other Designations	endosome-associated FYVE-domain protein

## Pathway

- [TGF-beta signaling pathway](#)